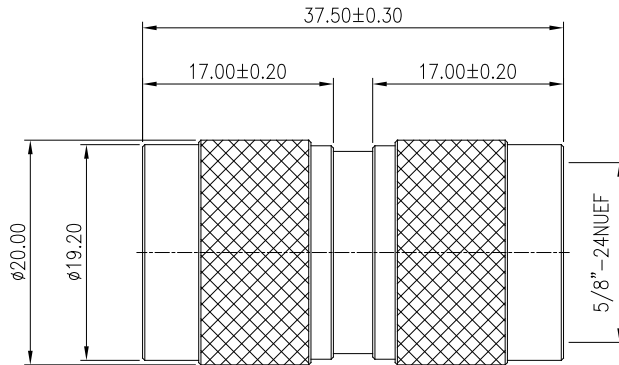


**COAXIAL
ADAPTER & TERMINATOR**

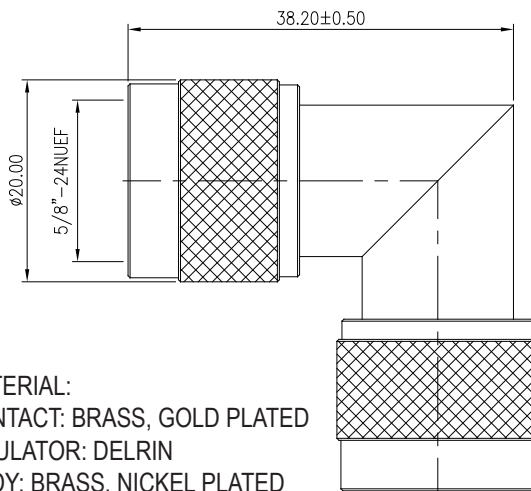
RF ADAPTER

MODEL NAME RFA001-NPNP-00 (N PLUG TO N PLUG)



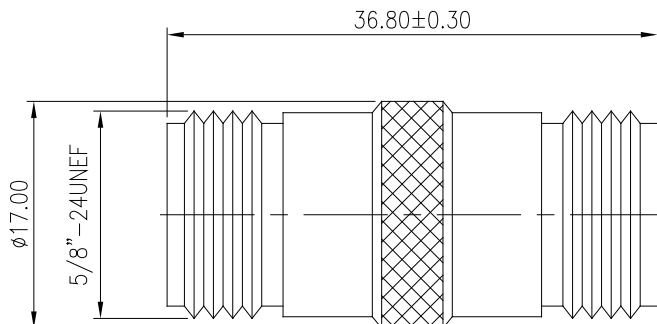
MATERIAL:
 CONTACT: BRASS, NICKEL PLATED
 INSULATOR: DELRIN
 BODY: BRASS, NICKEL PLATED

MODEL NAME RFA002-NPNP-10 (N PLUG TO N PLUG)



MATERIAL:
 CONTACT: BRASS, GOLD PLATED
 INSULATOR: DELRIN
 BODY: BRASS, NICKEL PLATED

MODEL NAME RFA003-NJNJ-00 (N JACK TO N JACK)

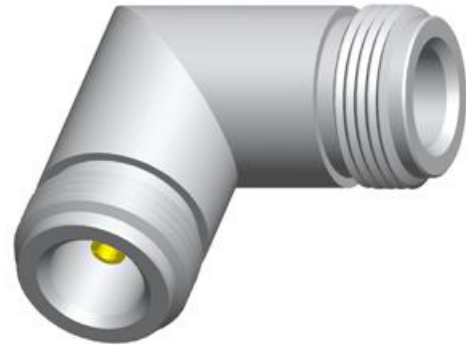
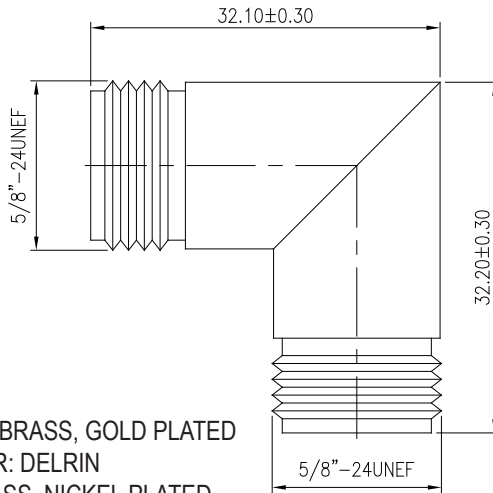


MATERIAL:
 CONTACT: BRASS, NICKEL PLATED
 INSULATOR: DELRIN
 BODY: BRASS, NICKEL PLATED

NOTE: SOME SIZES, STYLES AND OPTIONS ARE NON-STANDARD, NON-CANCELLABLE AND NON-RETURNABLE.

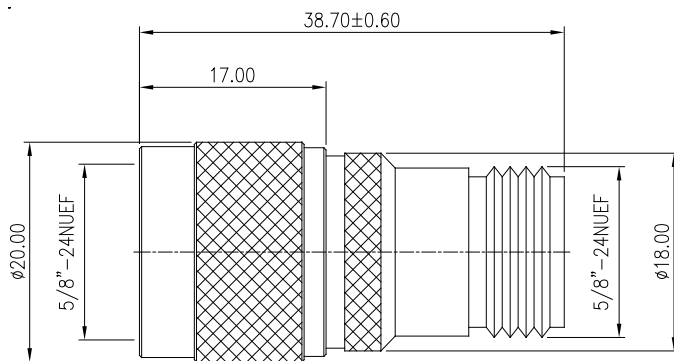
RF ADAPTER

MODEL NAME RFA004-NJNJ-10 (N JACK TO N JACK)



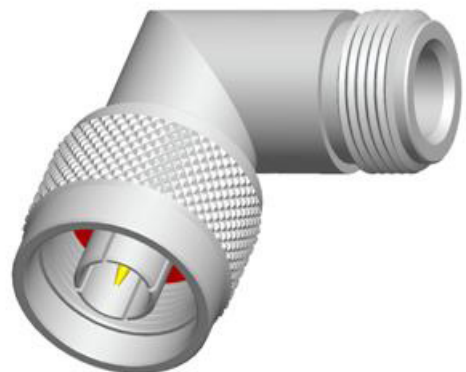
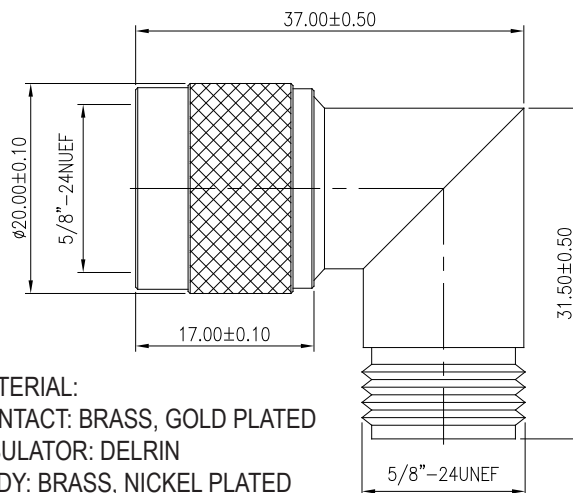
MATERIAL:
 CONTACT: BRASS, GOLD PLATED
 INSULATOR: DELRIN
 BODY: BRASS, NICKEL PLATED

MODEL NAME RFA005-NPNJ-00 (N PLUG TO N JACK)



MATERIAL:
 CONTACT: BRASS, NICKEL PLATED
 INSULATOR: DELRIN
 BODY: BRASS, NICKEL PLATED

MODEL NAME RFA006-NPNJ-10 (N PLUG TO N JACK)

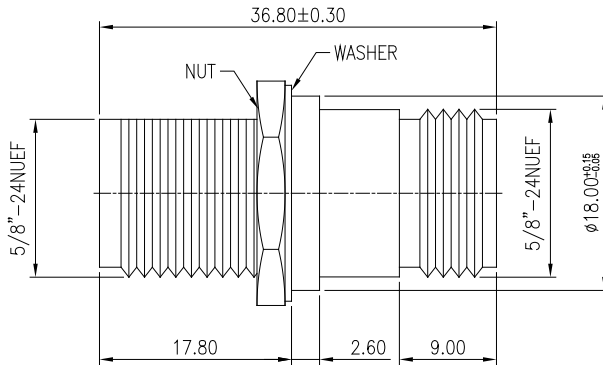


MATERIAL:
 CONTACT: BRASS, GOLD PLATED
 INSULATOR: DELRIN
 BODY: BRASS, NICKEL PLATED

NOTE: SOME SIZES, STYLES AND OPTIONS ARE NON-STANDARD, NON-CANCELLABLE AND NON-RETURNABLE.

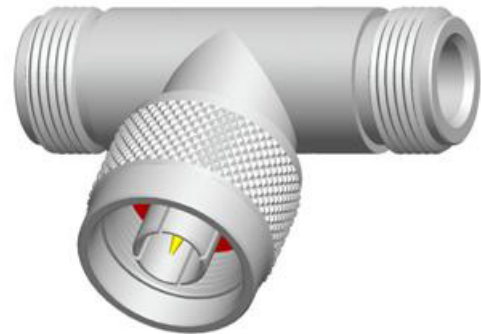
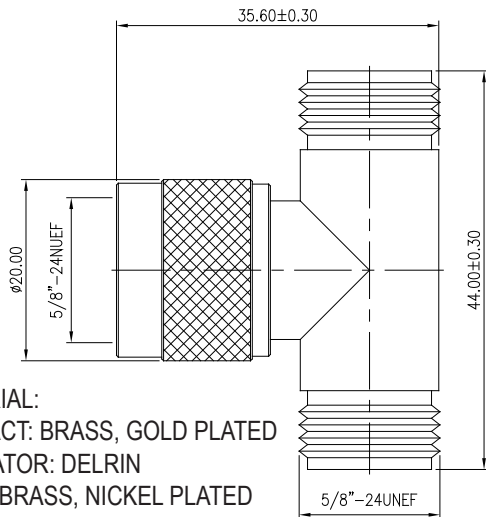
RF ADAPTER

MODEL NAME *RFA007-NJNJ-00 (N JACK TO N JACK)*



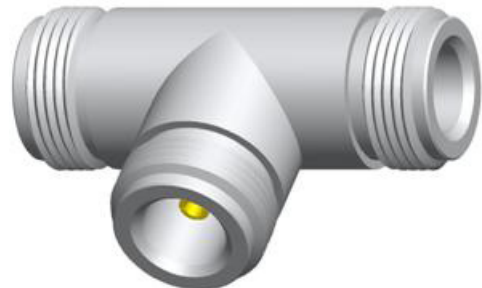
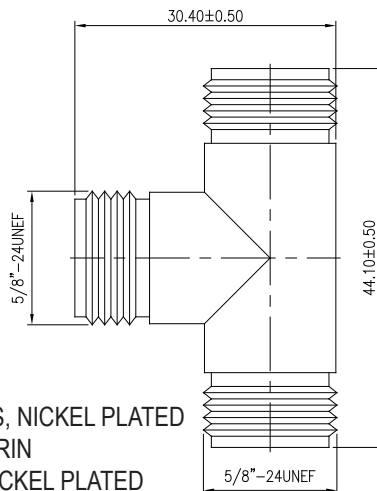
MATERIAL:
 CONTACT: BRASS, NICKEL PLATED
 INSULATOR: DELRIN
 BODY: BRASS, NICKEL PLATED

MODEL NAME *RFA009-NJNPJ-10 (N "T" FEMALE-MALE-FEMALE)*



MATERIAL:
 CONTACT: BRASS, GOLD PLATED
 INSULATOR: DELRIN
 BODY: BRASS, NICKEL PLATED

MODEL NAME *RFA010-NJNJNJ-00 (N "T" FEMALE-FEMALE-FEMALE)*

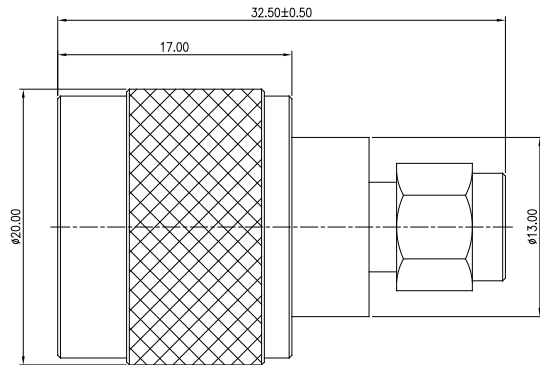


MATERIAL:
 CONTACT: BRASS, NICKEL PLATED
 INSULATOR: DELRIN
 BODY: BRASS, NICKEL PLATED

NOTE: SOME SIZES, STYLES AND OPTIONS ARE NON-STANDARD, NON-CANCELLABLE AND NON-RETURNABLE.

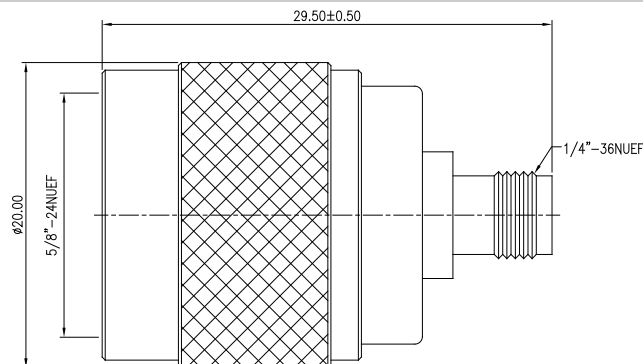
RF ADAPTER

MODEL NAME **RFA011-NPSP-10 (N PLUG TO SMA PLUG)**



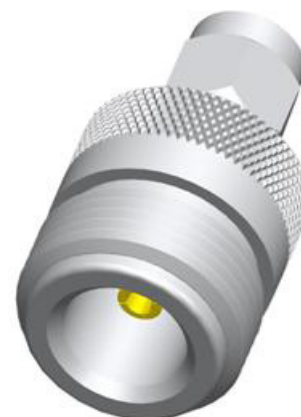
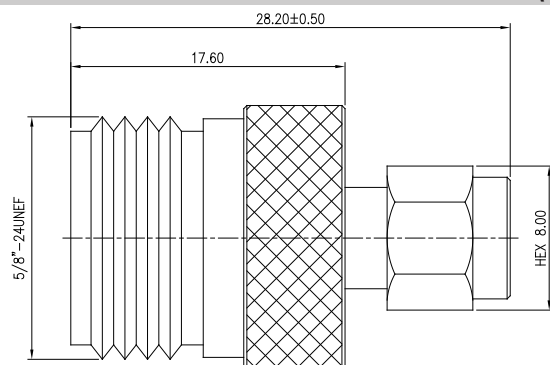
MATERIAL:
 CONTACT: BRASS, GOLD PLATED
 INSULATOR: DELRIN
 BODY: BRASS, NICKEL PLATED

MODEL NAME **RFA012-NPSJ-10 (N PLUG TO SMA JACK)**



MATERIAL:
 CONTACT: BRASS, GOLD PLATED
 INSULATOR: DELRIN
 BODY: BRASS, NICKEL PLATED

MODEL NAME **RFA013-NJSP-10 (N JACK TO SMA PLUG)**

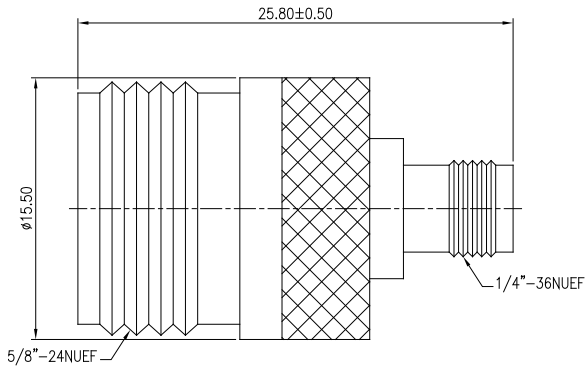


MATERIAL:
 CONTACT: BRASS, GOLD PLATED
 INSULATOR: DELRIN
 BODY: BRASS, NICKEL PLATED

NOTE: SOME SIZES, STYLES AND OPTIONS ARE NON-STANDARD, NON-CANCELLABLE AND NON-RETURNABLE.

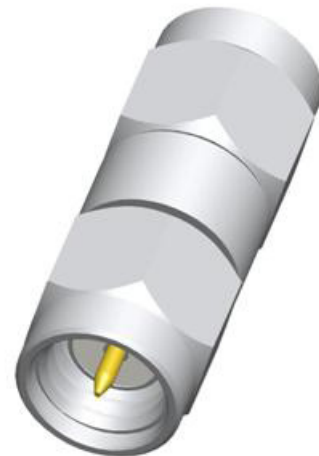
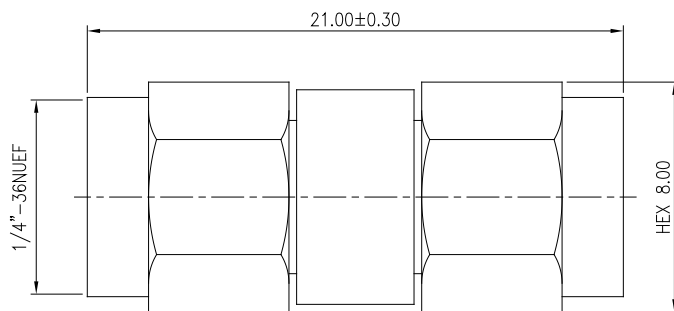
RF ADAPTER

MODEL NAME **RFA014-NJSJ-10 (N JACK TO SMA JACK)**



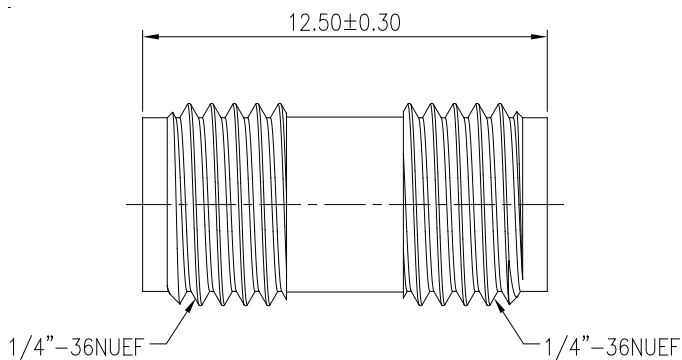
MATERIAL:
 CONTACT: BRASS, GOLD PLATED
 INSULATOR: DELRIN
 BODY: BRASS, NICKEL PLATED

MODEL NAME **RFA021-SPSP-10 (SMA PLUG TO SMA PLUG)**



MATERIAL:
 CONTACT: BRASS, GOLD PLATED
 INSULATOR: DELRIN
 BODY: BRASS, NICKEL PLATED

MODEL NAME **RFA023-SJSJ-10 (SMA JACK TO SMA JACK)**

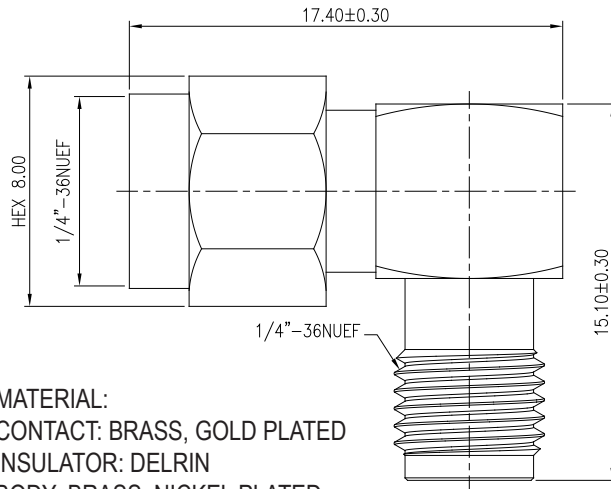


MATERIAL:
 CONTACT: BRASS, GOLD PLATED
 INSULATOR: DELRIN
 BODY: BRASS, NICKEL PLATED

NOTE: SOME SIZES, STYLES AND OPTIONS ARE NON-STANDARD, NON-CANCELLABLE AND NON-RETURNABLE.

RF ADAPTER

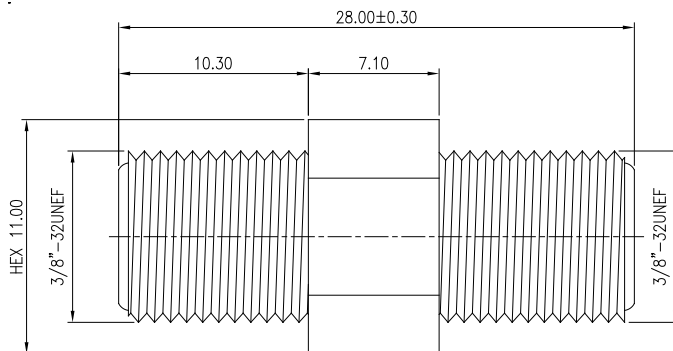
MODEL NAME **RFA026-SPSJ-10 (SMA PLUG TO SMA JACK)**



MATERIAL:
 CONTACT: BRASS, GOLD PLATED
 INSULATOR: DELRIN
 BODY: BRASS, NICKEL PLATED



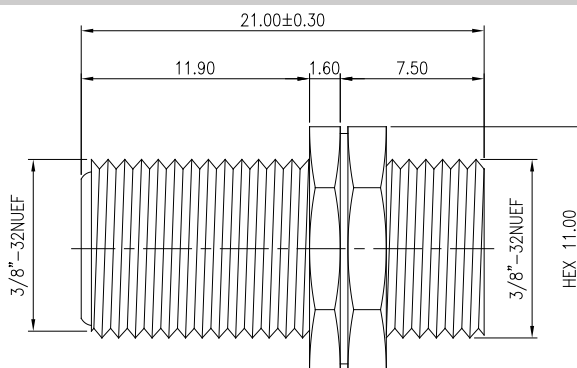
MODEL NAME **RFA031-FJFJ-20 (F JACK TO F JACK)**



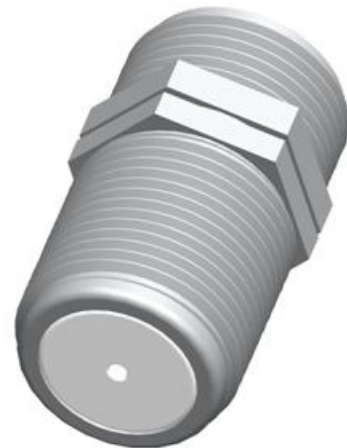
MATERIAL:
 CONTACT: BRASS, TIN PLATED
 INSULATOR: DELRIN
 BODY: BRASS, NICKEL PLATED



MODEL NAME **RFA032-FJFJ-20 (F JACK TO F JACK)**



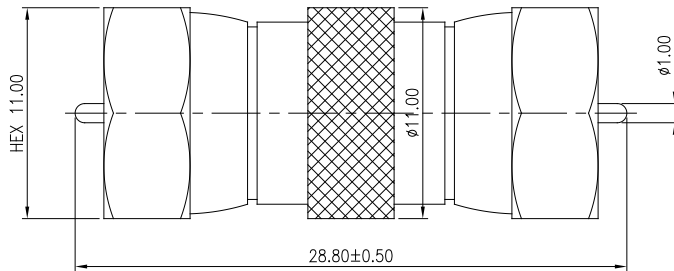
MATERIAL:
 CONTACT: BRASS, TIN PLATED
 INSULATOR: DELRIN
 BODY: BRASS, NICKEL PLATED



NOTE: SOME SIZES, STYLES AND OPTIONS ARE NON-STANDARD, NON-CANCELLABLE AND NON-RETURNABLE.

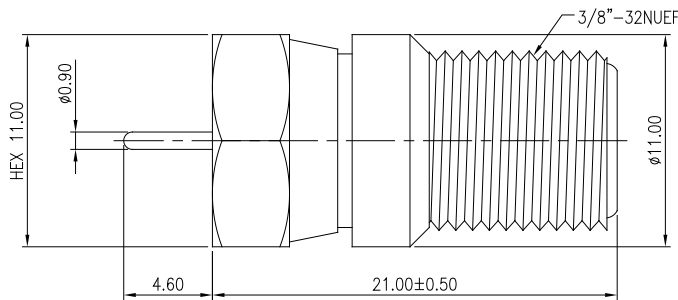
RF ADAPTER

MODEL NAME RFA033-FPPF-00 (F PLUG TO F PLUG)



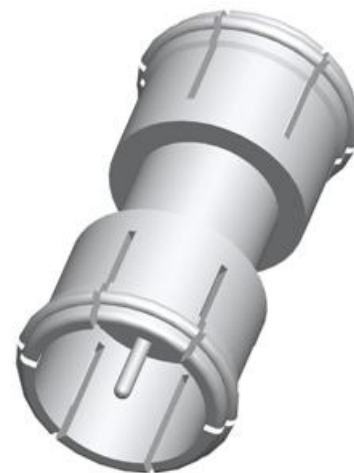
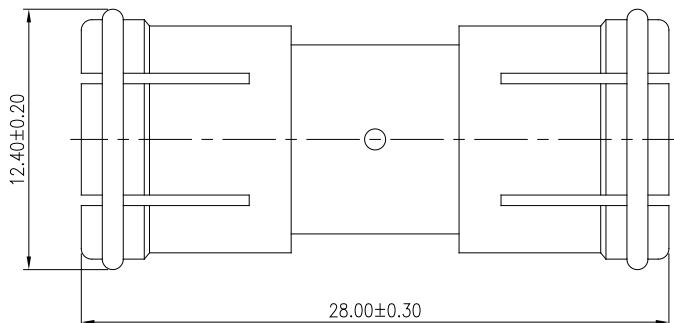
MATERIAL:
 CONTACT: BRASS, NICKEL PLATED
 INSULATOR: DELRIN
 BODY: BRASS, NICKEL PLATED

MODEL NAME RFA034-FPFJ-20 (F PLUG TO F JACK)



MATERIAL:
 CONTACT: BRASS, TIN PLATED
 INSULATOR: DELRIN
 BODY: BRASS, NICKEL PLATED

MODEL NAME RFA035-FPPF-00 (F PLUG TO F PLUG)

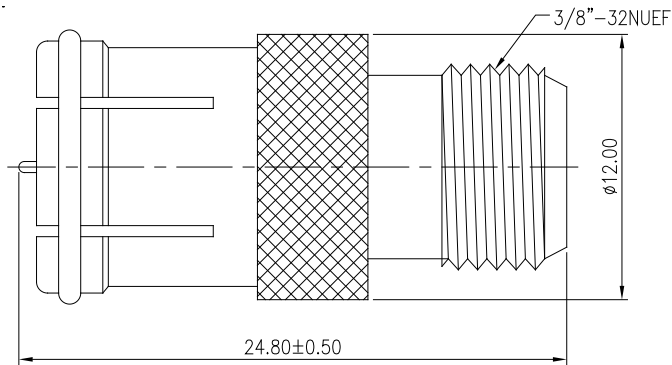


MATERIAL:
 CONTACT: BRASS, NICKEL PLATED
 INSULATOR: DELRIN
 BODY: BRASS, NICKEL PLATED

NOTE: SOME SIZES, STYLES AND OPTIONS ARE NON-STANDARD, NON-CANCELLABLE AND NON-RETURNABLE.

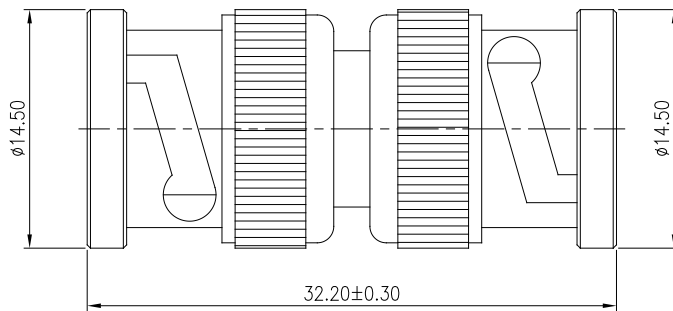
RF ADAPTER

MODEL NAME RFA036-FPFJ-20 (F PLUG TO F JACK)



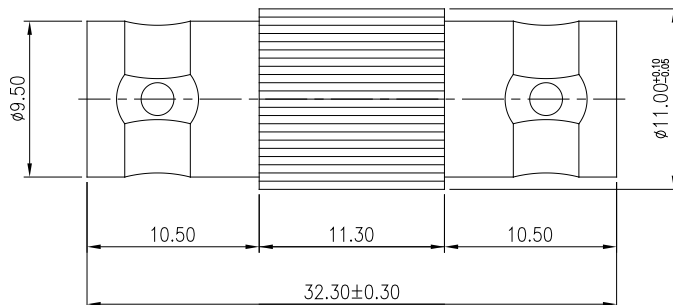
MATERIAL:
 CONTACT: BRASS, TIN PLATED
 INSULATOR: DELRIN
 BODY: BRASS, NICKEL PLATED

MODEL NAME RFA041-BPBP-10 (BNC PLUG TO BNC PLUG)



MATERIAL:
 CONTACT: BRASS, GOLD PLATED
 INSULATOR: DELRIN
 BODY: BRASS, NICKEL PLATED

MODEL NAME RFA043-BJBJ-10 (BNC JACK TO BNC JACK)

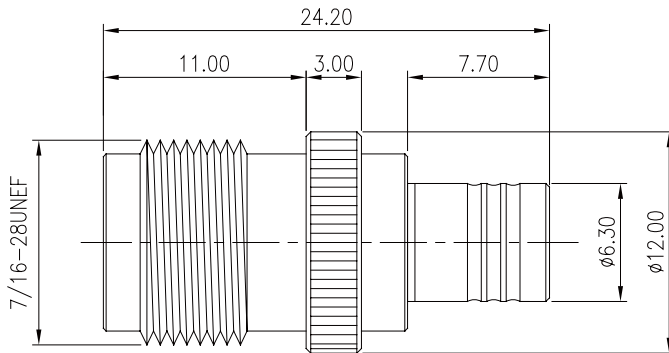


MATERIAL:
 CONTACT: BRASS, GOLD PLATED
 INSULATOR: DELRIN
 BODY: BRASS, NICKEL PLATED

NOTE: SOME SIZES, STYLES AND OPTIONS ARE NON-STANDARD, NON-CANCELLABLE AND NON-RETURNABLE.

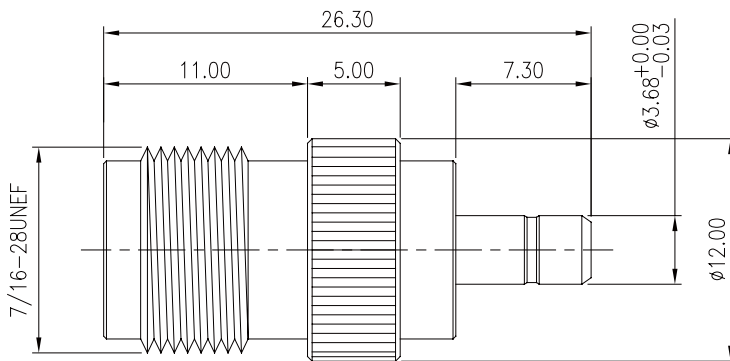
RF ADAPTER

MODEL NAME *RFA063-RTJSMBP-10*



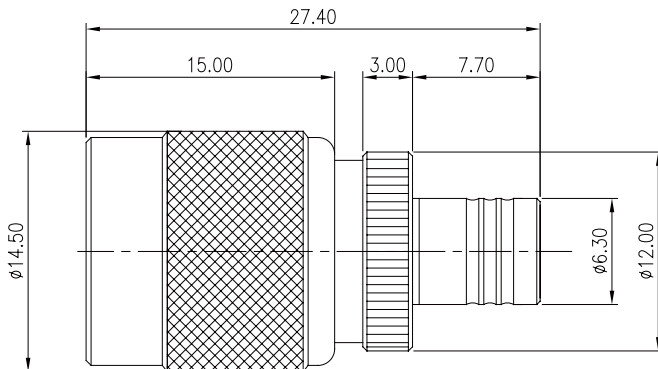
MATERIAL:
CONTACT: BRASS, GOLD PLATED
INSULATOR: TEFLON
BODY: BRASS, NICKEL PLATED

MODEL NAME *RFA063-RTJSMBJ-10*



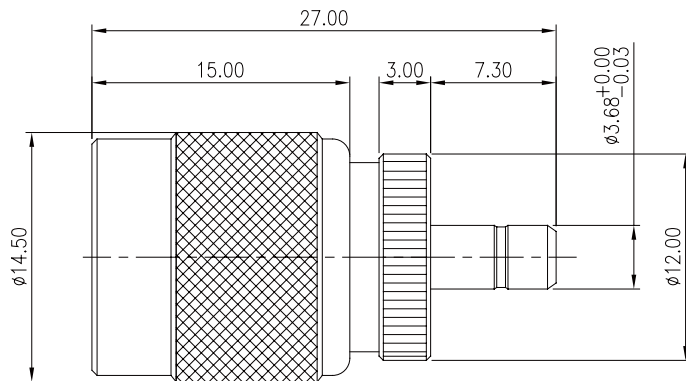
MATERIAL:
CONTACT: BRASS, GOLD PLATED
INSULATOR: TEFLON
BODY: BRASS, NICKEL PLATED

MODEL NAME *RFA063-TPSMBP-10*



MATERIAL:
CONTACT: BRASS, GOLD PLATED
INSULATOR: TEFLON
BODY: BRASS, NICKEL PLATED

NOTE: SOME SIZES, STYLES AND OPTIONS ARE NON-STANDARD, NON-CANCELLABLE AND NON-RETURNABLE.

RF ADAPTER**MODEL NAME** *RFA063-TPSMBJ-10*

MATERIAL:
CONTACT: BRASS, GOLD PLATED
INSULATOR: TEFLON
BODY: BRASS, NICKEL PLATED

**MODEL NAME****MODEL NAME**

NOTE: SOME SIZES, STYLES AND OPTIONS ARE NON-STANDARD, NON-CANCELLABLE AND NON-RETURNABLE.

www.mmtmachrone.com

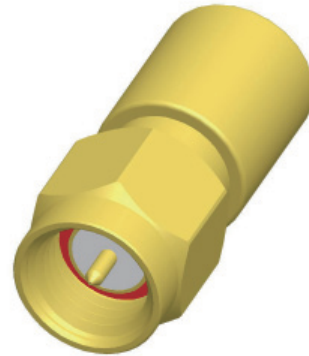
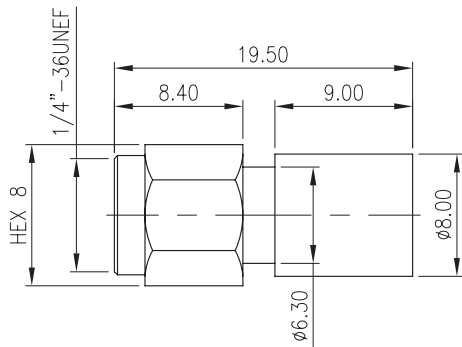
USA TEL: 1-510-979-2188
FAX: 1-510-979-2189

TAIWAN TEL: 886-2-2755-3193
FAX: 886-2-2784-5109

SINGAPORE TEL: 65-6274-0566
FAX: 65-6274-7891

COAXIAL TERMINATOR

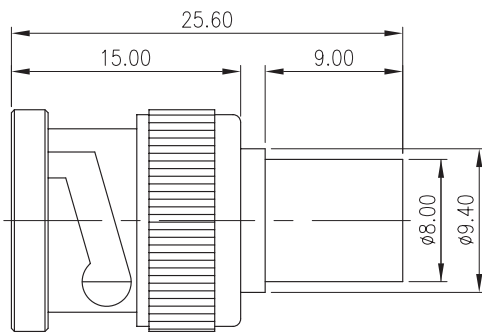
MODEL NAME SMA001-TMMGfG



MATERIAL:
 CONTACT: BRASS, GOLD PLATED
 BODY: BRASS, GOLD PLATED
 INSULATOR: TEFLON

ELECTRICAL:
 IMPEDANCE: 50Ω

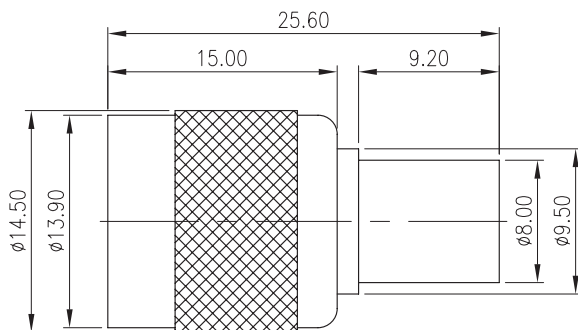
MODEL NAME BNC001-TMMGfN1



MATERIAL:
 CONTACT: BRASS, GOLD PLATED
 BODY: BRASS, NICKEL PLATED
 INSULATOR: TEFLON

ELECTRICAL:
 IMPEDANCE: 50Ω
 POWER: 0.25W

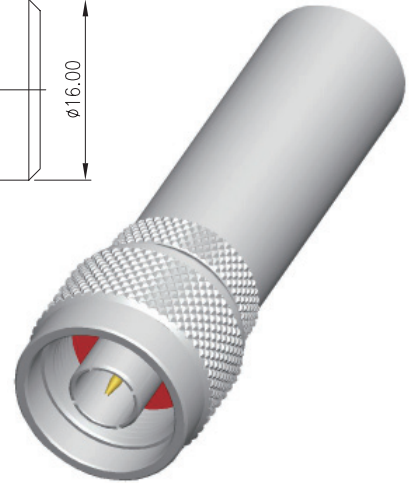
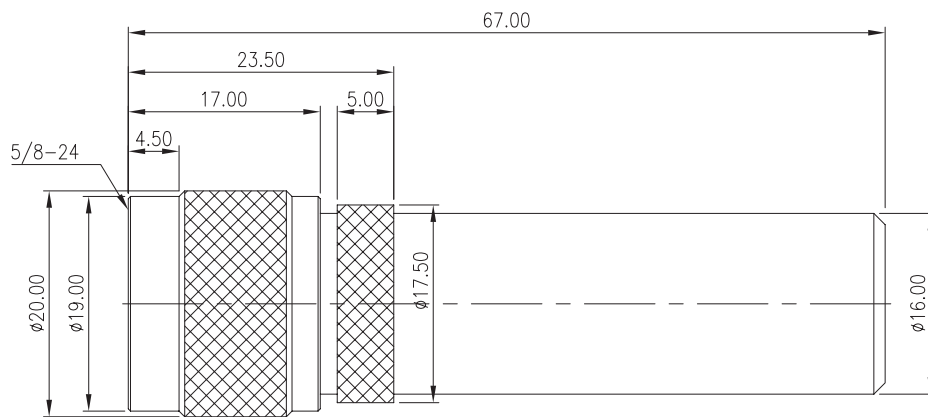
MODEL NAME TNC001-TMMGfN



MATERIAL:
 CONTACT: BRASS, GOLD PLATED
 BODY: BRASS, NICKEL PLATED
 INSULATOR: TEFLON

ELECTRICAL:
 IMPEDANCE: 50Ω

NOTE: SOME SIZES, STYLES AND OPTIONS ARE NON-STANDARD, NON-CANCELLABLE AND NON-RETURNABLE.

COAXIAL TERMINATORMODEL NAME **NC001-TMMGfN1**

MATERIAL:
BODY: BRASS, NICKEL PLATED
PIN: BRASS, GOLD PLATED
INSULATOR: TEFLON

ELECTRICAL:
IMPEDANCE: 50 Ω
POWER: 10W

NOTE: SOME SIZES, STYLES AND OPTIONS ARE NON-STANDARD, NON-CANCELLABLE AND NON-RETURNABLE.

www.mmtmachrone.com

USA TEL: 1-510-979-2188
FAX: 1-510-979-2189

TAIWAN TEL: 886-2-2755-3193
FAX: 886-2-2784-5109

SINGAPORE TEL: 65-6274-0566
FAX: 65-6274-7891