

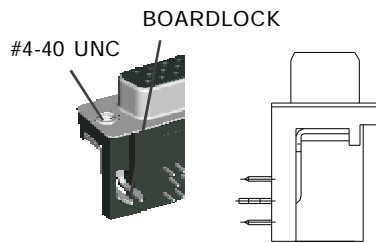
**MMI**

---

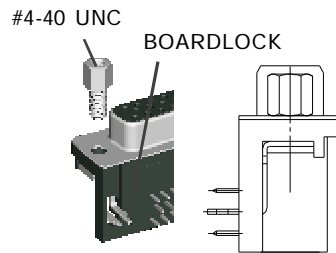
**HIGH DENSITY D-SUB  
(MACHINE PIN TYPE)**

---

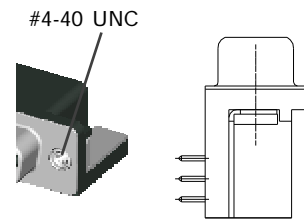
## HIGH DENSITY D- SUB 1XX SERIES MOUNTING OPTIONS



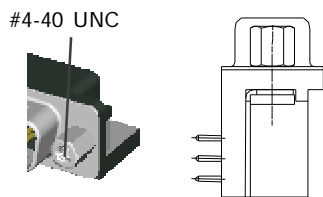
a TYPE  
WITH #4-40UNC THREAD INSERT  
GROUNDING BRACKET &  
BOARDLOCK



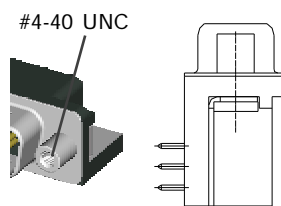
as TYPE  
WITH #4-40UNC HEX NUT  
GROUNDING BRACKET &  
BOARDLOCK



b TYPE  
WITH #4-40UNC THREAD INSERT  
GROUNDING BRACKET

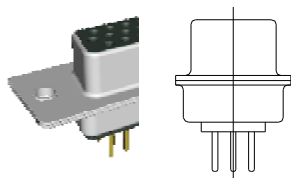


d TYPE  
WITH FIXED #4-40UNC HEX NUT  
GROUNDING BRACKET

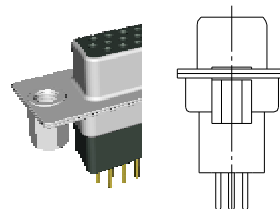


rd TYPE  
WITH FIXED #4-40UNC ROUND NUT  
GROUNDING BRACKET

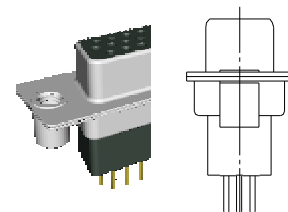
## HIGH DENSITY D- SUB 2XX SERIES MOUNTING OPTIONS



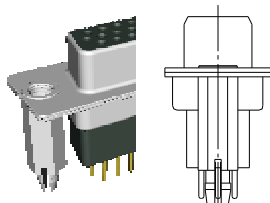
H TYPE  
WITH MOUNTING HOLE ONLY



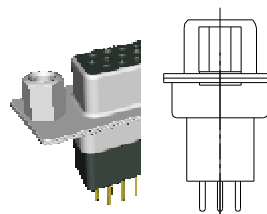
I TYPE  
WITH #4-40UNC HEX NUT  
IN THE REAR OF THE SHELL



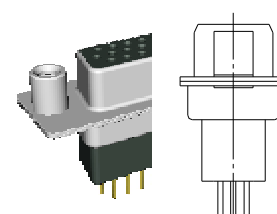
J TYPE  
WITH #4-40UNC ROUND NUT  
IN THE REAR OF THE SHELL



K TYPE  
WITH #4-40UNC IN THE REAR SHELL  
USE RIVET AS BOARDLOCK



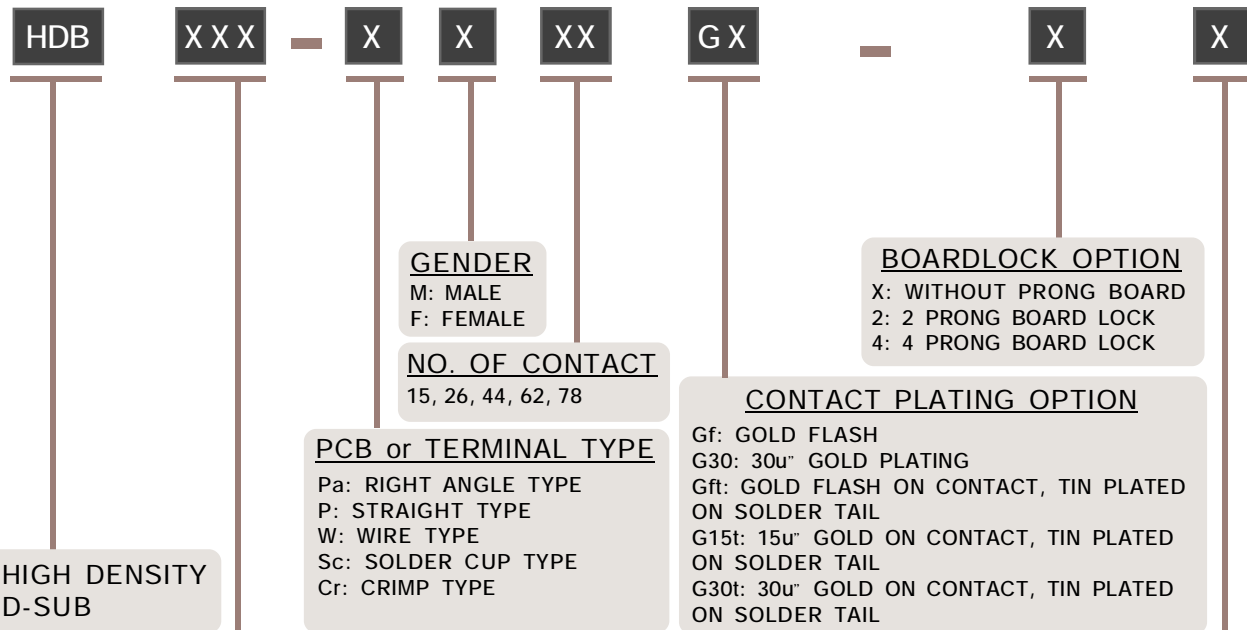
L TYPE  
WITH #4-40UNC HEX NUT  
IN THE FRONT OF THE SHELL



M TYPE  
WITH #4-40UNC ROUND NUT  
IN THE FRONT OF THE SHELL

NOTE : SOME SIZES, STYLES AND OPTION ARE NON-STANDARD, NON-CANCELLABLE, NON-RETURNABLE

# HIGH DENSITY D-SUB CONNECTOR PART NO. INFORMATION



**SERIES NO.**

1XX: RIGHT ANGLE TYPE  
-130  
-132  
-14X  
-150

2XX: STRAIGHT TYPE  
-200  
-210  
-230  
-250

3XX: WIRE TYPE  
-300: LENTH= 10.00 mm  
-310: LENTH= 13.00 mm  
-320: LENTH= 17.50 mm

4XX: SOLDER CUP TYPE  
- 400

5XX: CRIMP TYPE  
- 500

9XX: MACHINE PIN TYPE  
-900: FOOTPRINT= 9.30 mm  
-910: FOOTPRINT= 7.19 mm

**MOUNTING TYPE**

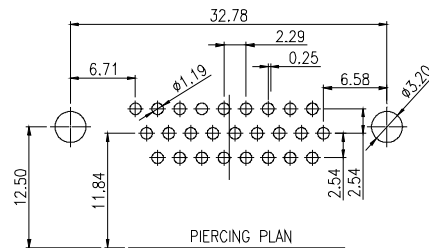
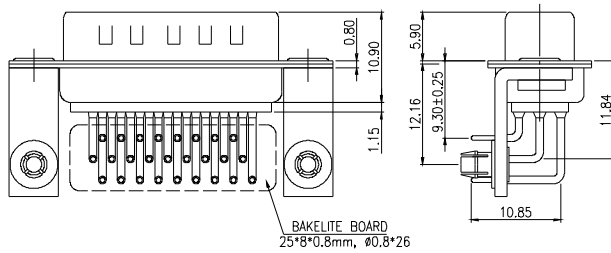
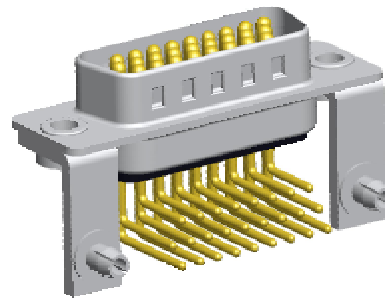
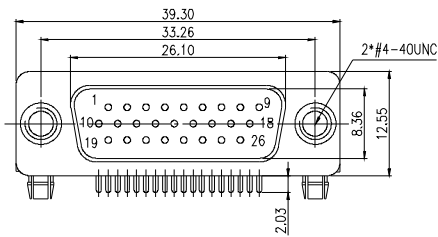
FOR RIGHT ANGLE TYPE  
a :WITH #4-40UNC THREAD INSERT GROUNDING BRACKET & BOARDLOCK  
b: WITH #4-40UNC THREAD INSERT GROUNDING BRACKET  
d: WITH FIXED #4-40UNC HEX NUT GROUNDING BRACKET  
rd: WITH FIXED #4-40UNC ROUND NUT GROUNDING BRACKET

FOR STRAIGHT TYPE  
H: WITH MOUNTING HOLE ONLY  
I: WITH #4-40UNC HEX NUT IN THE REAR OF THE SHELL  
J: WITH #4-40UNC ROUND NUT IN THE REAR OF THE SHELL  
K: WITH #4-40UNC IN THE REAR SHELL USE RIVET AS BOARDLOCK  
L: WITH #4-40UNC HEX NUT IN THE FRONT OF THE SHELL  
M: WITH #4-40UNC ROUND NUT IN THE FRONT OF THE SHELL

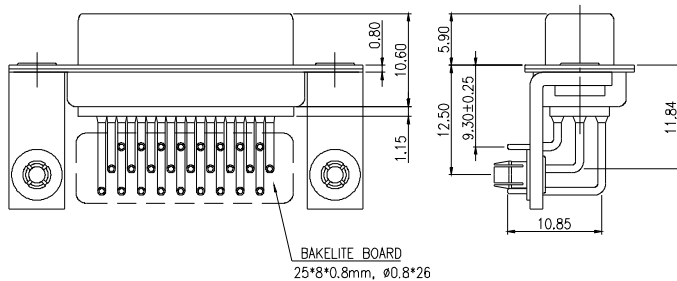
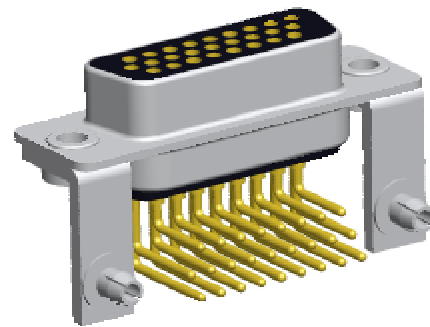
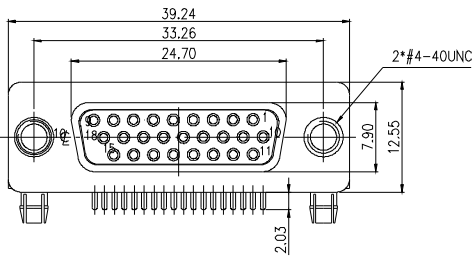
NOTE : SOME SIZES, STYLES AND OPTION ARE NON-STANDARD, NON-CANCELLABLE, NON-RETURNABLE

# HDB 900 SERIES - MOUNTING TYPE 2aB RIGHT ANGLE TYPE - Pa

## MALE



## FEMALE



|                            |  |  |                                       |                             |  |  |  |
|----------------------------|--|--|---------------------------------------|-----------------------------|--|--|--|
| <b>HDB</b>                 | <b>900</b>                                   | <b>Pa</b>                                | <b>X</b>                              | <b>26</b>                   | <b>Gf</b>  | <b>2</b>   | <b>aB</b>  |
| <b>HIGH DENSITY D- SUB</b> | <b>SERIES NO.</b><br>900: FOOT PRINT= 9.30mm | <b>PCB TYPE.</b><br>Pa: RIGHT ANGLE TYPE | <b>GENDER</b><br>M: MALE<br>F: FEMALE | <b>NO. OF CONTACT</b><br>26 | <b>CONTACT PLATING OPTION</b><br>Gf: GOLD FLASH OVER ALL | <b>BOARDLOCK OPTION</b><br>2: 2 PRONG BOARD LOCK | <b>a: WITH #4-40UNC THREAD INSERT GROUNDING BRACKET &amp; BOARDLOCK</b><br><b>B: BAKELITE BOARD (OPTION)</b> |

### ELECTRICAL CHARACTERISTIC

INSULATION RESISTANCE: 1000 OHM MIN. AT 500V DC  
DIELECTRIC WITHSTANDING VOLTAGE: AC 500V / MIN.  
OPERATING TEMPERATURE: -40°C ~ +105°C

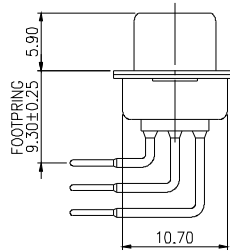
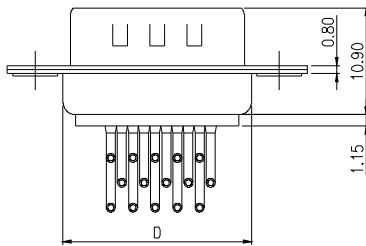
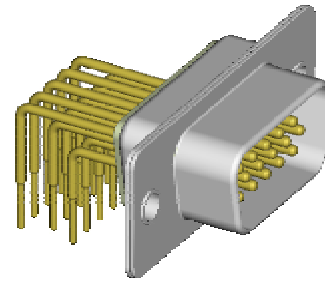
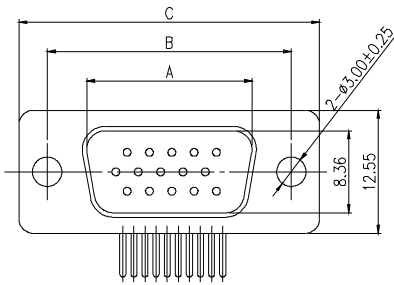
### MATERIALS

INSULATOR: P.B.T. UL 94V-0 RATED  
SHELL: STEEL ZINC PLATED OR TIN PLATED  
CONTACTS: BRASS OR PHOSPHOR

NOTE : SOME SIZES, STYLES AND OPTION ARE NON-STANDARD, NON-CANCELLABLE, NON-RETURNABLE

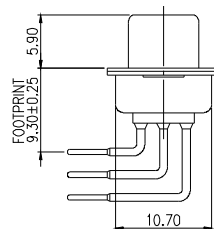
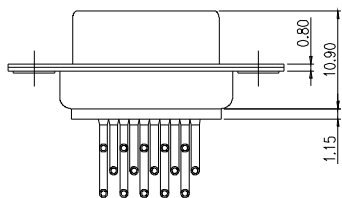
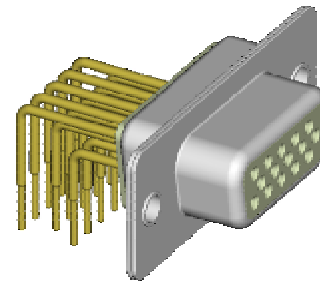
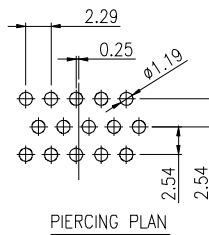
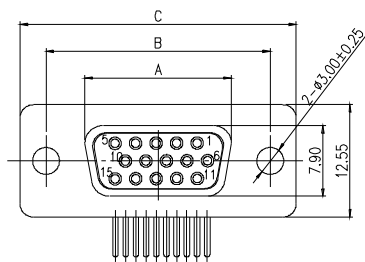
# HDB 900 SERIES - MOUNTING TYPE H RIGHT ANGLE TYPE - Pa

## MALE

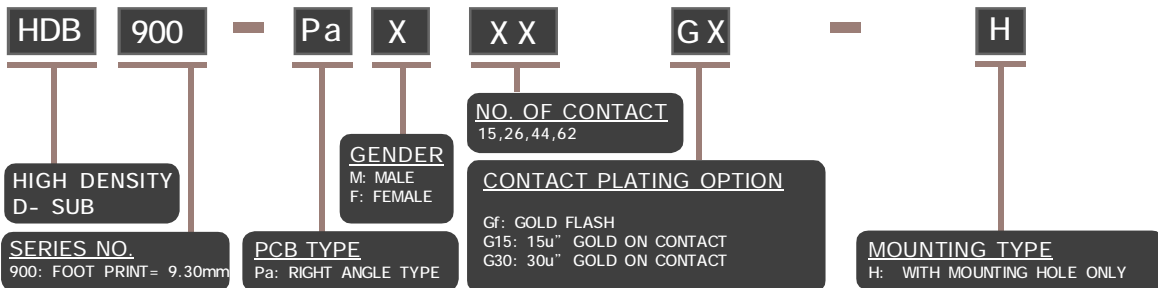


| MODEL NO.        | NO.OF CONTACTS (SHELL SIZE) | DIMENSION |        |        |       |
|------------------|-----------------------------|-----------|--------|--------|-------|
|                  |                             | A±0.2     | B±0.25 | C±0.38 | D±0.2 |
| HDB900-PaM09GX-H | 15P                         | 16.92     | 24.99  | 30.81  | 19.28 |
| HDB900-PaM15GX-H | 26P                         | 25.25     | 33.32  | 39.14  | 27.51 |
| HDB900-PaM25GX-H | 44P                         | 38.96     | 47.04  | 53.04  | 41.26 |
| HDB900-PaM37GX-H | 62P                         | 55.42     | 63.50  | 69.32  | 57.71 |

## FEMALE



| MODEL NO.        | NO.OF CONTACTS (SHELL SIZE) | DIMENSION |        |        |
|------------------|-----------------------------|-----------|--------|--------|
|                  |                             | A±0.2     | B±0.25 | C±0.38 |
| HDB900-PaF15GX-H | 15P                         | 16.33     | 24.99  | 30.81  |
| HDB900-PaF26GX-H | 26P                         | 24.67     | 32.96  | 39.23  |
| HDB900-PaF44GX-H | 44P                         | 38.38     | 47.04  | 53.14  |
| HDB900-PaF62GX-H | 62P                         | 54.84     | 63.50  | 69.44  |



### ELECTRICAL CHARACTERISTIC

INSULATION RESISTANCE: 1000 OHM MIN. AT 500V DC  
 DIELECTRIC WITHSTANDING VOLTAGE: AC 500V / MIN.  
 OPERATING TEMPERATURE: -40°C - +105°C

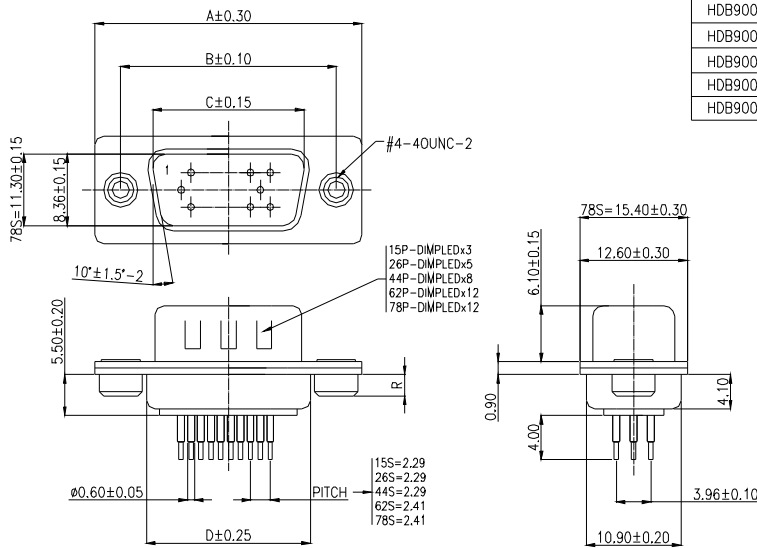
### MATERIALS

INSULATOR: P.B.T. UL 94V-0 RATED  
 SHELL: STEEL ZINC PLATED OR TIN PLATED  
 CONTACTS: BRASS OR PHOSPHOR

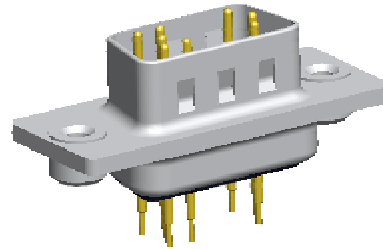
NOTE : SOME SIZES, STYLES AND OPTION ARE NON-STANDARD, NON-CANCELLABLE, NON-RETURNABLE

# HDB 900 SERIES - MOUNTING TYPE J STRAIGHT TYPE - P

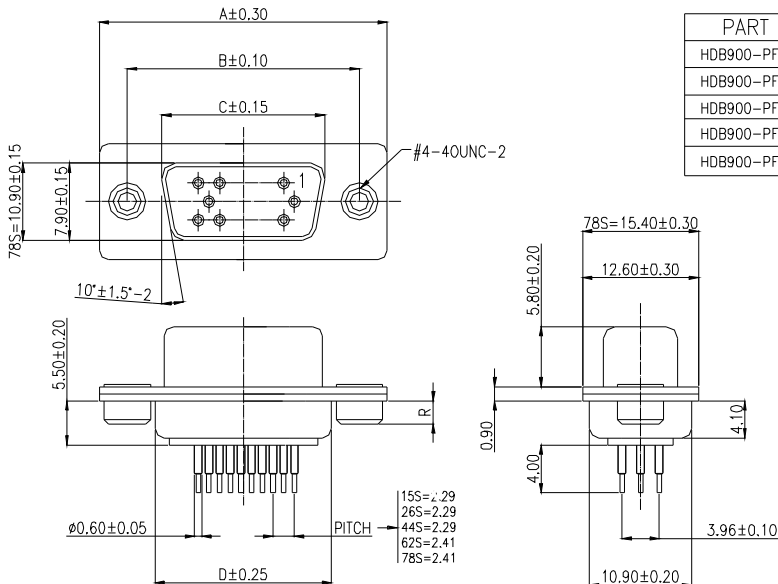
## MALE



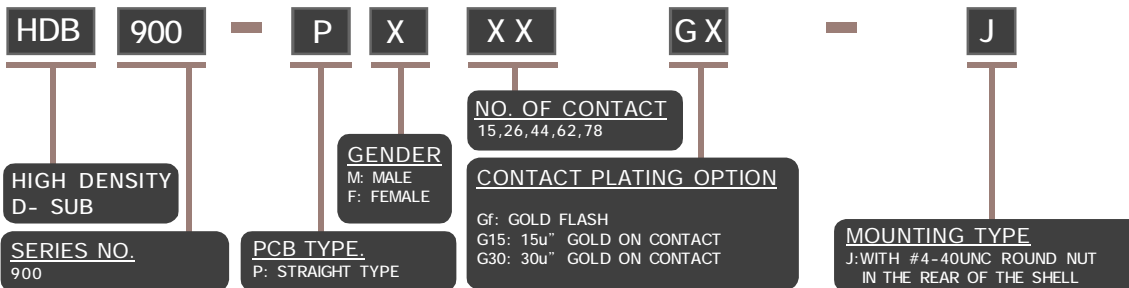
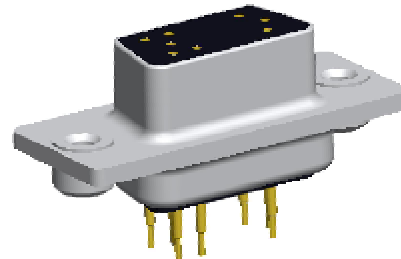
| PART NO         | A     | B     | C     | D     | R          |
|-----------------|-------|-------|-------|-------|------------|
| HDB900-PM15GX-J | 30.80 | 24.99 | 16.92 | 19.20 | 2.5<br>6.0 |
| HDB900-PM26GX-J | 39.20 | 33.32 | 25.25 | 27.70 |            |
| HDB900-PM44GX-J | 53.00 | 47.04 | 38.95 | 41.10 |            |
| HDB900-PM62GX-J | 69.40 | 63.50 | 55.40 | 57.30 |            |
| HDB900-PM78GX-J | 67.00 | 61.10 | 52.80 | 55.10 |            |



## FEMALE



| PART NO         | A     | B     | C     | D     | R          |
|-----------------|-------|-------|-------|-------|------------|
| HDB900-PF15GX-J | 30.80 | 24.99 | 16.34 | 19.20 | 2.5<br>6.0 |
| HDB900-PF26GX-J | 39.20 | 33.32 | 24.70 | 27.70 |            |
| HDB900-PF44GX-J | 53.00 | 47.04 | 38.40 | 41.10 |            |
| HDB900-PF62GX-J | 69.40 | 63.50 | 54.80 | 57.30 |            |
| HDB900-PF78GX-J | 67.00 | 61.10 | 52.20 | 55.10 |            |



### ELECTRICAL CHARACTERISTIC

CONTACT CURRENT RATING: 5 AMP  
 CONTACT RESISTANCE: 15 M OHM MAX.  
 INSULATION RESISTANCE: 1000 OHM MIN.  
 DIELECTRIC WITHSTANDING VOLTAGE: AC 500V / MIN. RMS  
 OPERATING TEMPERATURE: -55°C ~ +105°C

### MATERIALS

INSULATOR: NYLON- 6T, BLACK UL94V- 0  
 SHELL: STEEL, TIN PLATED  
 CONTACTS: BRASS, STAMPED- PIN  
 GOLD PLATED OVER NICKEL

NOTE : SOME SIZES, STYLES AND OPTION ARE NON-STANDARD, NON-CANCELLABLE, NON-RETURNABLE