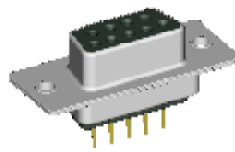


**D-SUB CONNECTOR
(SOLDER CUP TYPE)**

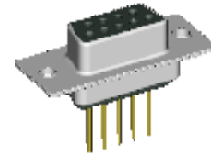
D-SUBMINIATURE CLASSIFICATION



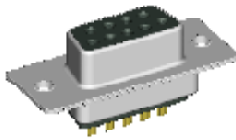
* RIGHT ANGLE D-SUB(Pa)
DB 1XX SERIES



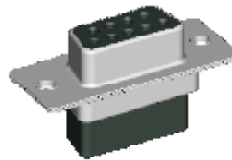
* STRAIGHT D-SUB(P)
DB 2XX SERIES



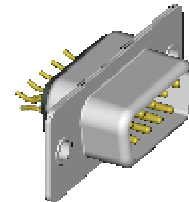
* WIRING D-SUB(W)
DB 3XX SERIES



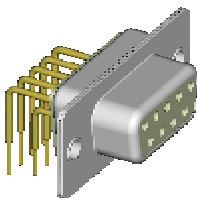
* SOLDER CUP D-SUB(Sc)
DB 4XX SERIES



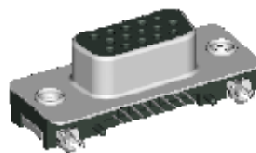
* CRIMP D-SUB(Cr)
DB 5XX SERIES



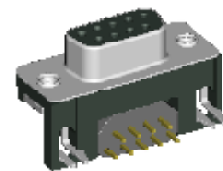
* STRADDLE D-SUB(Ste)
DB 6XX SERIES



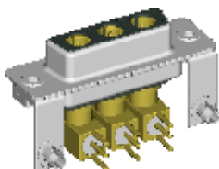
* MACHINE PIN D-SUB
DB 9XX SERIES



* HIGH DENSITY D-SUB
HDB SERIES



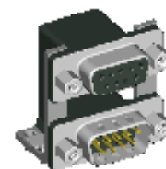
* EMI D- SUB
EDB & EHDB SERIES



* COMBO D-SUB
CDB SERIES



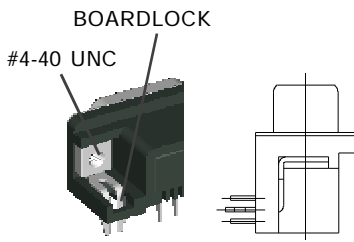
* IDC D-SUB
IDB SERIES



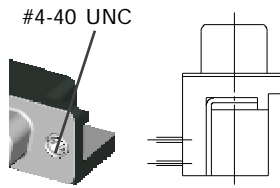
* STACK D-SUB
SDB SERIES

NOTE : SOME SIZES, STYLES AND OPTION ARE NON-STANDARD, NON-CANCELLABLE, NON-RETURNABLE

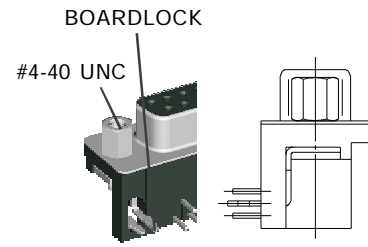
DB1XX SERIES MOUNTING OPTIONS



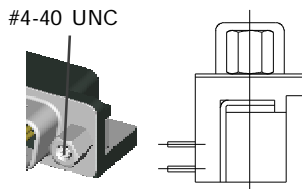
a TYPE
WITH #4-40UNC THREAD INSERT
GROUNDING BRACKET &
BOARDLOCK



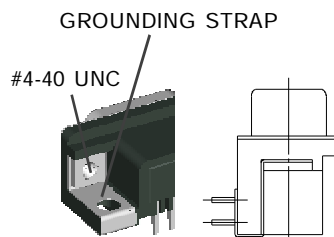
b TYPE
WITH #4-40UNC THREAD INSERT
GROUNDING BRACKET



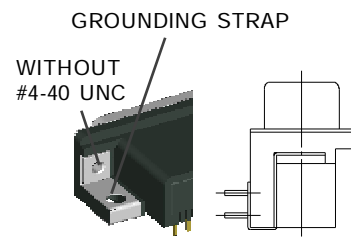
c TYPE
WITH FIXED #4-40UNC HEX NUT
GROUNDING BRACKET &
BOARDLOCK



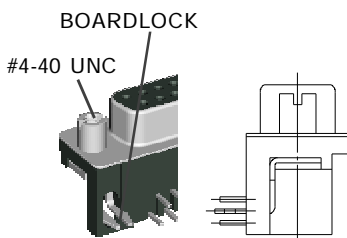
d TYPE
WITH FIXED #4-40UNC HEX NUT
GROUNDING BRACKET



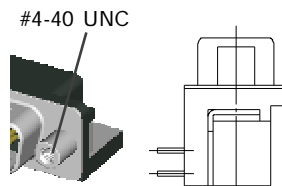
e TYPE
WITH #4-40UNC THREAD INSERT
GROUNDING STRAP



en TYPE
WITHOUT #4-40UNC THREAD INSERT
WITH GROUNDING STRAP



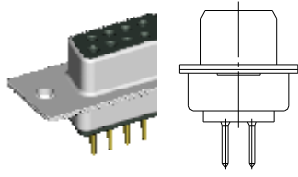
rc TYPE
WITH FIXED #4-40UNC ROUND NUT
GROUNDING BRACKET &
BOARDLOCK



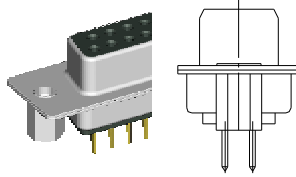
rd TYPE
WITH FIXED #4-40UNC ROUND NUT
GROUNDING BRACKET

NOTE : SOME SIZES, STYLES AND OPTION ARE NON-STANDARD, NON-CANCELLABLE, NON-RETURNABLE

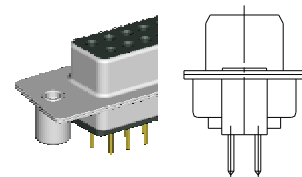
DB 2XX SERIES MOUNTING OPTIONS



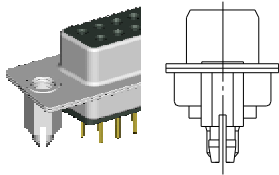
H TYPE
WITH MOUNTING HOLE ONLY



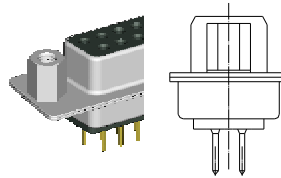
I TYPE
WITH #4-40UNC HEX NUT
IN THE REAR OF THE SHELL



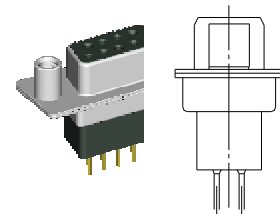
J TYPE
WITH #4-40UNC ROUND NUT
IN THE REAR OF THE SHELL



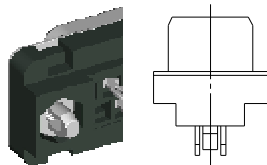
K TYPE
WITH #4-40UNC IN THE REAR SHELL
USE RIVET AS BOARDLOCK



L TYPE
WITH #4-40UNC HEX NUT
IN THE FRONT OF THE SHELL



M TYPE
WITH #4-40UNC ROUND NUT
IN THE FRONT OF THE SHELL



P TYPE
WITH #4-40UNC IN THE REAR SHELL
USE PRESS FIT BOARDLOCK

NOTE : SOME SIZES, STYLES AND OPTION ARE NON-STANDARD, NON-CANCELLABLE, NON-RETURNABLE

D-SUB CONNECTOR PART NO. INFORMATION

DB **XXX** - **X** **X** **XX** **GX** - **X** **X**

D-SUB CONNECTOR

GENDER

M: MALE
F: FEMALE

NO. OF CONTACT

09,15,25,37,50

PCB or TERMINAL TYPE

Pa: RIGHT ANGLE TYPE
P: STRAIGHT TYPE
W: WIRE TYPE
Sc: SOLDER CUP TYPE
Cr: CRIMP TYPE
Ste: STRADDLE MOUNT TYPE

BOARDLOCK OPTION

X: WITHOUT PRONG BOARD
2: 2 PRONG BOARD LOCK
4: 4 PRONG BOARD LOCK

CONTACT PLATING OPTION

Gf: GOLD FLASH
G30: 30u" GOLD PLATING
Gft: GOLD FLASH ON CONTACT, TIN PLATED ON SOLDER TAIL
G15t: 15u" GOLD ON CONTACT, TIN PLATED ON SOLDER TAIL
G30t: 30u" GOLD ON CONTACT, TIN PLATED ON SOLDER TAIL

SERIES NO.

- 1XX: RIGHT ANGLE TYPE
 - 100: FOOTPRINT= 8.08 mm
 - 120: FOOTPRINT= 14.84 mm
 - 121: FOOTPRINT= 8.00 mm
 - 131: FOOTPRINT= 1.60 mm
 - 132: FOOTPRINT= 1.20 mm
 - 160: FOOTPRINT= 5.08 mm
- 2XX: STRAIGHT TYPE
 - 200: LENTH= 4.85 mm
 - 210: LENTH= 5.00 mm
 - 250: PRESS FIT PCB TYPE
- 3XX: WIRE TYPE
 - 300: LENTH= 10.50 mm
 - 310: LENTH= 13.50 mm
 - 320: LENTH= 17.50 mm
- 4XX: SOLDER CUP TYPE
 - 400
- 5XX: CRIMP TYPE
 - 500
- 6XX: STRADDLE MOUNT TYPE
 - 600
- 9XX: MACHINE PIN TYPE
 - 900: FOOTPRINT= 8.00 mm
 - 910: FOOTPRINT= 10.20 mm
 - 930: FOOTPRINT= 8.19 mm
 - 931: FOOTPRINT= 10.39 mm

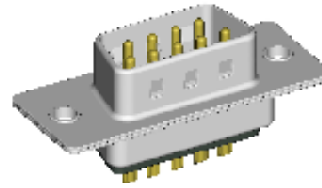
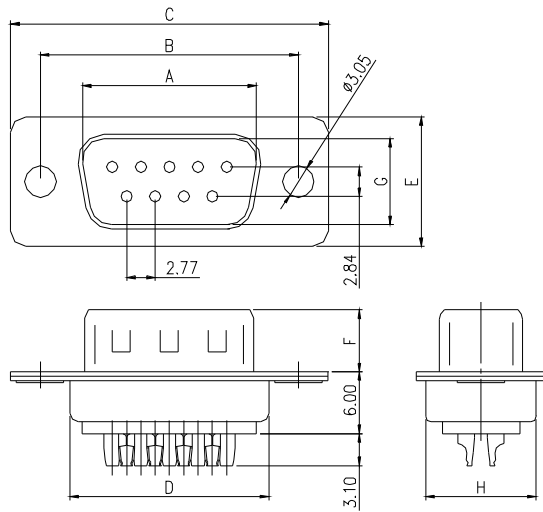
MOUNTING TYPE

- FOR RIGHT ANGLE TYPE
 - a :WITH #4-40UNC THREAD INSERT GROUNDING BRACKET & BOARDLOCK
 - an: WITHOUT #4-40UNC THREAD INSERT GROUNDING BRACKET & BOARDLOCK
 - b: WITH #4-40UNC THREAD INSERT GROUNDING BRACKET
 - c: WITH FIXED #4-40UNC HEX NUT GROUNDING BRACKET & BOARDLOCK
 - d: WITH FIXED #4-40UNC HEX NUT GROUNDING BRACKET
 - e : WITH #4-40UNC THREAD INSERT GROUNDING STRAP
 - en: WITHOUT #4-40UNC THREAD INSERT WITH GROUNDING STRAP
 - rc: WITH FIXED #4-40UNC ROUND NUT GROUNDING BRACKET & BOARDLOCK
 - rd: WITH FIXED #4-40UNC ROUND NUT GROUNDING BRACKET
- FOR STRAIGHT TYPE
 - H: WITH MOUNTING HOLE ONLY
 - I: WITH #4-40UNC HEX NUT IN THE REAR OF THE SHELL
 - J: WITH #4-40UNC ROUND NUT IN THE REAR OF THE SHELL
 - K: WITH #4-40UNC IN THE REAR SHELL USE RIVET AS BOARDLOCK
 - L: WITH #4-40UNC HEX NUT IN THE FRONT OF THE SHELL
 - M: WITH #4-40UNC ROUND NUT IN THE FRONT OF THE SHELL
 - JP: WITH #4-40UNC ROUND NUT WITH PLASTIC INSERT IN THE REAR OF THE SHELL
 - P: WITH #4-40UNC IN THE REAR SHELL USE PRESS FIT BOARDLOCK

NOTE : SOME SIZES, STYLES AND OPTION ARE NON-STANDARD, NON-CANCELLABLE, NON-RETURNABLE

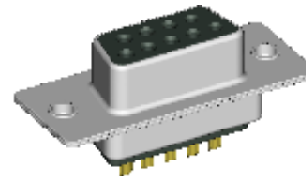
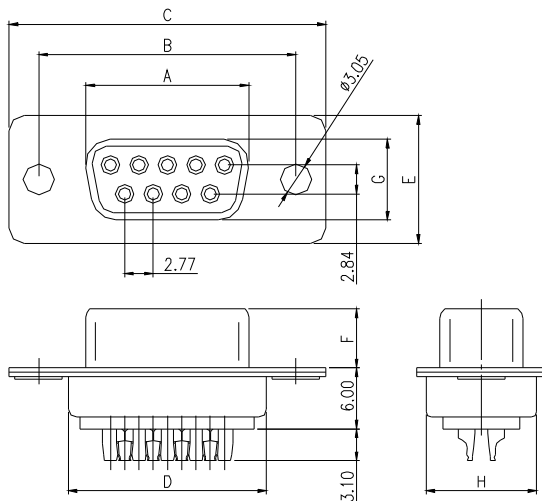
D-SUB 400 SERIES *MOUNTING TYPE H* SOLDER TYPE - Sc

MALE

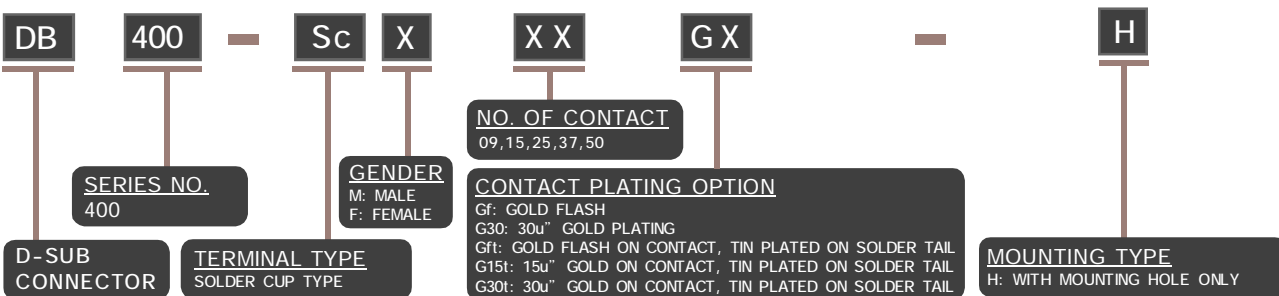


PART NO.	NO.OF CONTACTS (SHELL SIZE)	DIMENSION							
		A	B	C	D	E	F	G	H
DB400-ScM09GX-H	9P	16.92	24.99	30.81	19.30	12.50	6.00	8.30	10.75
DB400-ScM15GX-H	15P	25.25	33.32	39.14	27.60	12.50	6.00	8.30	10.75
DB400-ScM25GX-H	25P	38.96	47.04	53.04	41.10	12.50	6.00	8.30	10.75
DB400-ScM37GX-H	37P	55.42	63.50	69.32	57.30	12.50	6.00	8.30	10.75
DB400-ScM50GX-H	50P	52.81	61.00	67.00	55.10	15.30	6.00	11.10	13.35

FEMALE



PART NO.	NO.OF CONTACTS (SHELL SIZE)	DIMENSION							
		A	B	C	D	E	F	G	H
DB400-ScF09GX-H	9P	16.30	24.99	30.81	19.30	12.50	5.80	7.90	10.75
DB400-ScF15GX-H	15P	24.60	33.32	39.14	27.60	12.50	5.80	7.90	10.75
DB400-ScF25GX-H	25P	38.30	47.04	53.04	41.10	12.50	5.80	7.90	10.75
DB400-ScF37GX-H	37P	54.80	63.50	69.32	57.30	12.50	5.80	7.90	10.75
DB400-ScF50GX-H	50P	52.20	61.00	67.00	55.10	15.30	6.00	10.90	13.35



ELECTRICAL CHARACTERISTIC

CONTACT CURRENT RATING: 1A
 CONTACT RESISTANCE: 25 mOHM MAX
 INSULATION RESISTANCE: 5000 MOHM MIN. AT DC 500V
 DIELECTRIC WITHSTANDING VOLTAGE: AC 1000V 1 MINUTE
 OPERATING TEMPERATURE: -55°C - +105°C

MECHANICAL CHARACTERISTICS

CONTACT INSERTION FORCE: 341 g MAX.
 CONTACT SEPARATION FORCE: 21 g MIN.

MATERIALS

INSULATOR: P.B.T UL 94V-0 RATED
 SHELL: COLD ROLLER STEEL
 CONTACTS: BRASS

NOTE : SOME SIZES, STYLES AND OPTION ARE NON-STANDARD, NON-CANCELLABLE, NON-RETURNABLE