

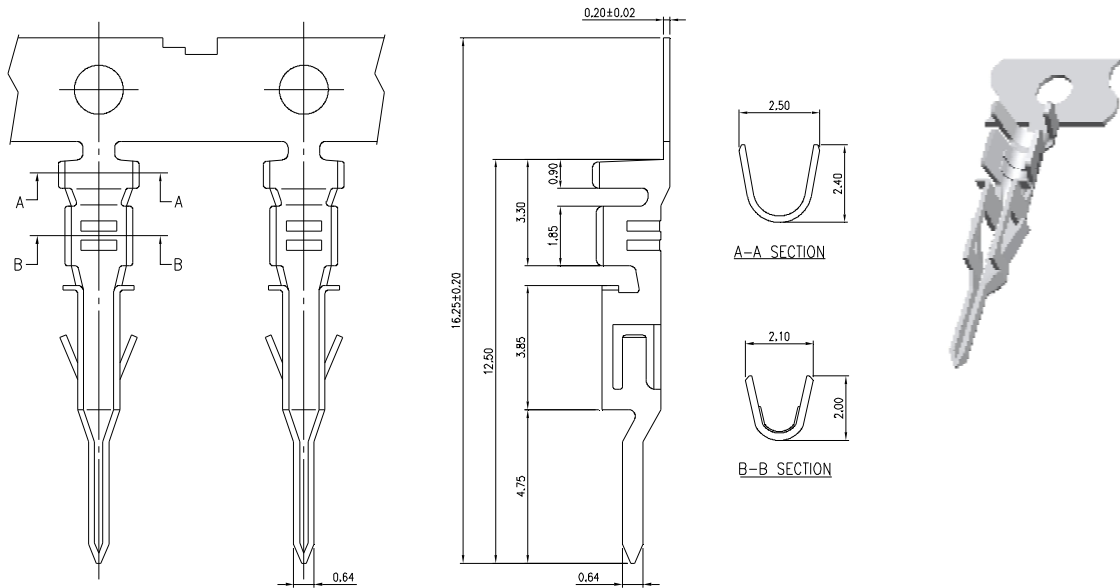
**MMI**

---

**WAFER, HOUSING & TERMINAL  
PITCH: 1.25x1.25mm**

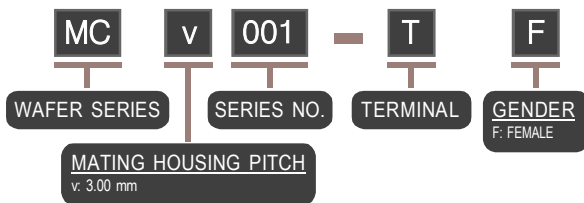
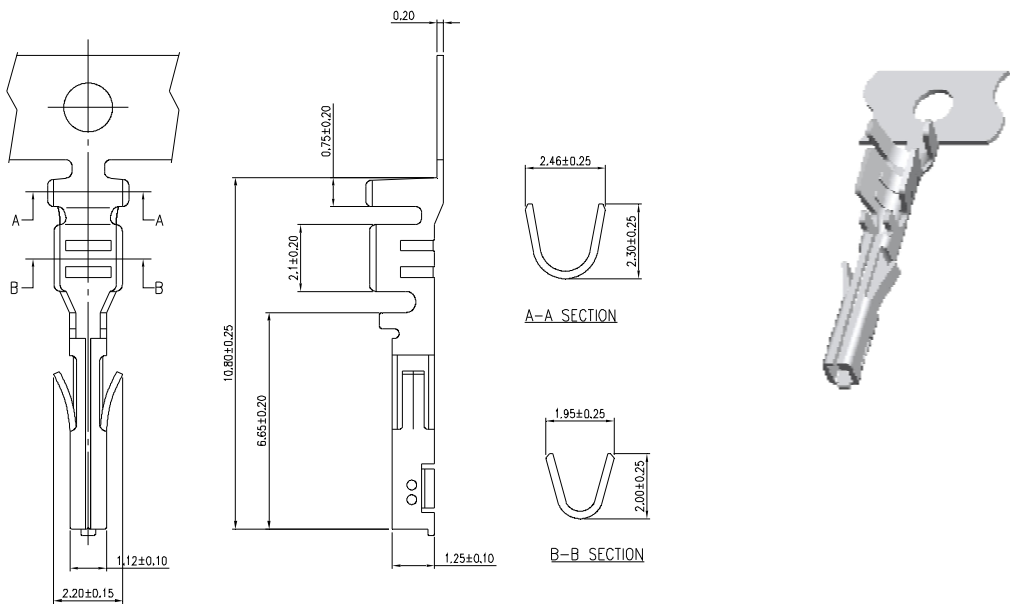
---

## TERMINAL- MCv 001 (MALE)



WIRE RANGE: AWG #20 - #24  
 INSULATION O.D.: 2.50mm MAX.  
 MATERIAL: PHOSPHOR BRONZE  
 FINISH: TIN PLATED

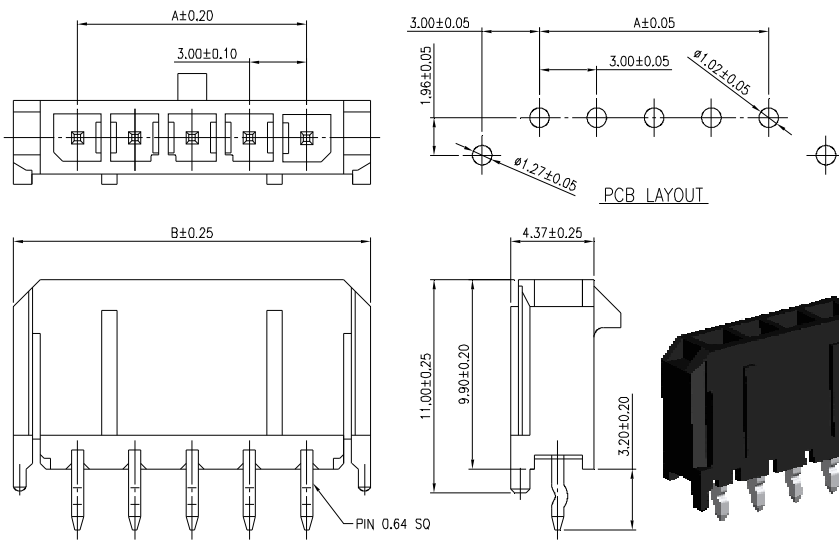
## TERMINAL- MCv 001 (FEMALE)



WIRE RANGE: AWG #20 - #24  
 INSULATION O.D.: 2.50mm MAX.  
 MATERIAL: PHOSPHOR BRONZE  
 FINISH: TIN PLATED

**NOTE** : SOME SIZES, STYLES AND OPTION ARE NON-STANDARD, NON-CANCELLABLE, NON-RETURNABLE

### 3.00 mm WAFER - MCv 001 STRAIGHT TYPE - P



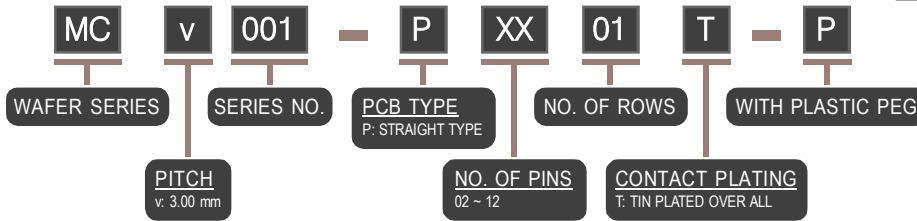
#### SPECIFICATIONS

VOLTAGE RATING: 100V AC/DC  
 CURRENT RATING: 1A AC/DC  
 WITHSTAND VOLTAGE: 500V AC/MINUTE  
 INSULATOR RESISTANCE: 500M OHM MIN.  
 TEMPERATURE RANGE: -25°C ~ +85°C  
 CONTACT RESISTANCE: 20m OHM MAX.

#### MATERIALS

BASE: NYLON 66, UL 94V-0  
 CONTACT: BRASS, TIN PLATED

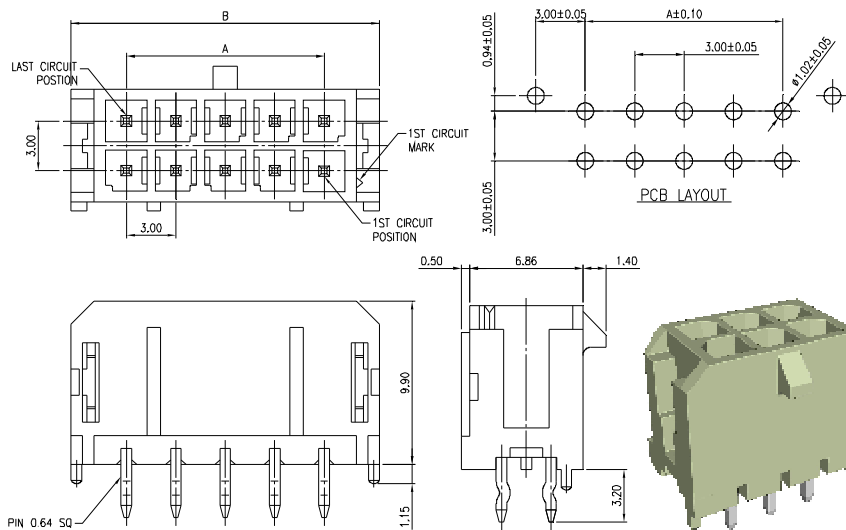
PART NO.	CIRCUITS	DIMENSION	
		A	B
MCv001-P0201T-P	1X2	3.00	9.65
MCv001-P0301T-P	1X3	6.00	12.65
MCv001-P0401T-P	1X4	9.00	15.65
MCv001-P0501T-P	1X5	12.00	18.65
MCv001-P0601T-P	1X6	15.00	21.65
MCv001-P0701T-P	1X7	18.00	24.65
MCv001-P0801T-P	1X8	21.00	27.65
MCv001-P0901T-P	1X9	24.00	30.65
MCv001-P1001T-P	1X10	27.00	33.65
MCv001-P1101T-P	1X11	30.00	36.65
MCv001-P1201T-P	1X12	33.00	39.65



#### MATING CONNECTOR

PRODUCT	PART NO.
HOUSING	MCv001-___-H
TERMINAL	MCv001-T

### 3.00 X 3.00 mm WAFER - MCv 001 STRAIGHT TYPE - P (2 ROWS)



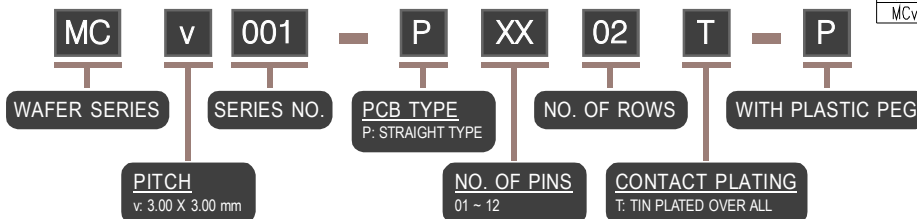
#### SPECIFICATIONS

VOLTAGE RATING: 100V AC/DC  
 CURRENT RATING: 1A AC/DC  
 WITHSTAND VOLTAGE: 500V AC/MINUTE  
 INSULATOR RESISTANCE: 500M OHM MIN.  
 TEMPERATURE RANGE: -25°C ~ +85°C  
 CONTACT RESISTANCE: 20m OHM MAX.

#### MATERIALS

BASE: NYLON 66, UL 94V-0  
 CONTACT: BRASS, TIN PLATED

PART NO.	CIRCUITS	DIMENSION	
		A	B
MCv001-P0102T-P	2X1	--	6.70
MCv001-P0202T-P	2X2	3.00	9.70
MCv001-P0302T-P	2X3	6.00	12.70
MCv001-P0402T-P	2X4	9.00	15.70
MCv001-P0502T-P	2X5	12.00	18.70
MCv001-P0602T-P	2X6	15.00	21.70
MCv001-P0702T-P	2X7	18.00	24.70
MCv001-P0802T-P	2X8	21.00	27.70
MCv001-P0902T-P	2X9	24.00	30.70
MCv001-P1002T-P	2X10	27.00	33.70
MCv001-P1102T-P	2X11	30.00	36.70
MCv001-P1202T-P	2X12	33.00	39.70

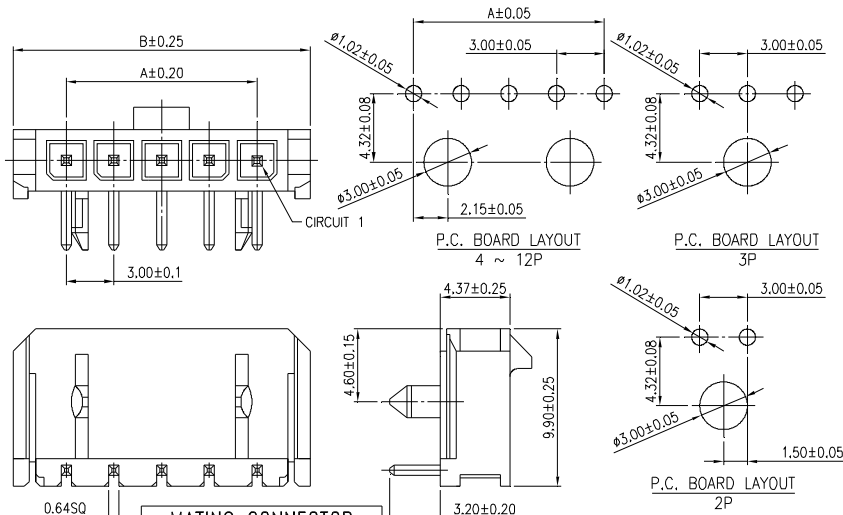


#### MATING CONNECTOR

PRODUCT	PART NO.
HOUSING	MCv001-___-H
TERMINAL	MCv001-T

NOTE : SOME SIZES, STYLES AND OPTION ARE NON-STANDARD, NON-CANCELLABLE, NON-RETURNABLE

### 3.00 mm WAFER - MCv 001 RIGHT ANGLE TYPE - Pa

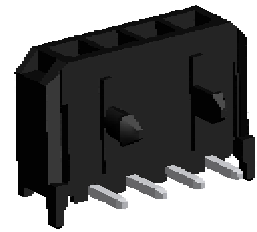
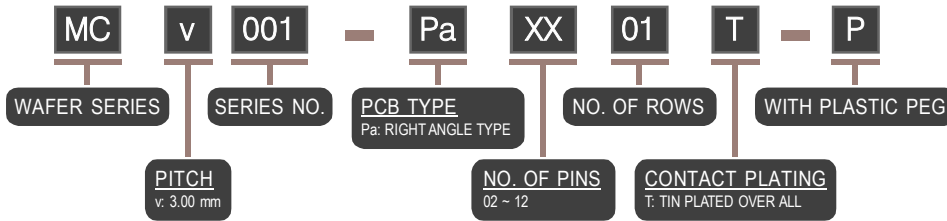


**SPECIFICATIONS**  
 VOLTAGE RATING: 100V AC/DC  
 CURRENT RATING: 1A AC/DC  
 WITHSTAND VOLTAGE: 500V AC/MINUTE  
 INSULATOR RESISTANCE: 500M OHM MIN.  
 TEMPERATURE RANGE: -25°C ~ +85°C  
 CONTACT RESISTANCE: 20m OHM MAX.

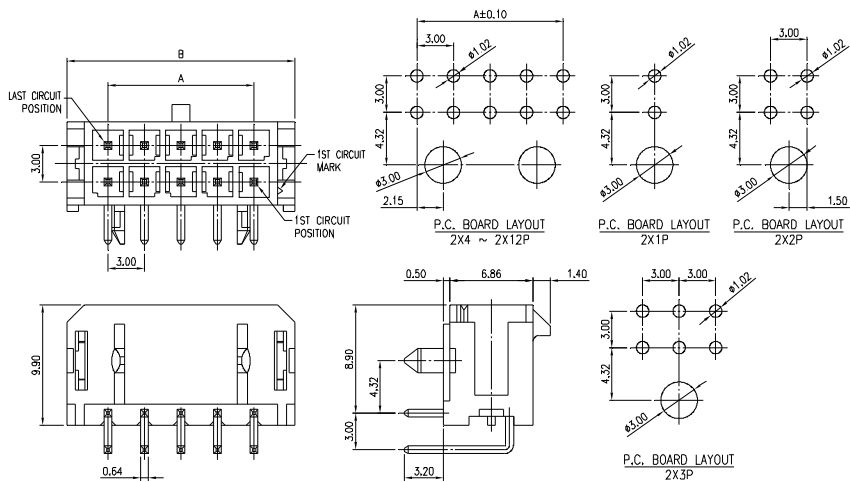
**MATERIALS**  
 BASE: NYLON 66, UL 94V-0  
 CONTACT: BRASS, TIN PLATED

PART NO.	CIRCUITS	DIMENSION	
		A	B
MCv001-Pa0201T-P	1X2	3.00	9.70
MCv001-Pa0301T-P	1X3	6.00	12.70
MCv001-Pa0401T-P	1X4	9.00	15.70
MCv001-Pa0501T-P	1X5	12.00	18.70
MCv001-Pa0601T-P	1X6	15.00	21.70
MCv001-Pa0701T-P	1X7	18.00	24.70
MCv001-Pa0801T-P	1X8	21.00	27.70
MCv001-Pa0901T-P	1X9	24.00	30.70
MCv001-Pa1001T-P	1X10	27.00	33.70
MCv001-Pa1101T-P	1X11	30.00	36.70
MCv001-Pa1201T-P	1X12	33.00	39.70

MATING CONNECTOR	
PRODUCT	PART NO.
HOUSING	MCv001-___-H
TERMINAL	MCv001-T



### 3.00 X3.00 mm WAFER - MCv 001 RIGHT ANGLE TYPE - Pa (2 ROWS)

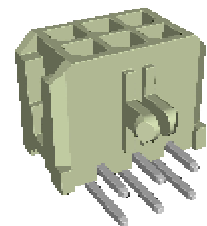
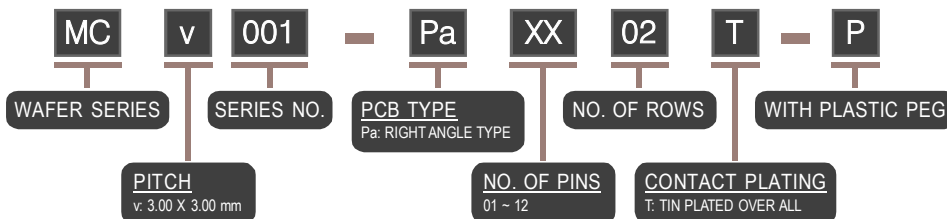


**SPECIFICATIONS**  
 VOLTAGE RATING: 100V AC/DC  
 CURRENT RATING: 1A AC/DC  
 WITHSTAND VOLTAGE: 500V AC/MINUTE  
 INSULATOR RESISTANCE: 500M OHM MIN.  
 TEMPERATURE RANGE: -25°C ~ +85°C  
 CONTACT RESISTANCE: 20m OHM MAX.

**MATERIALS**  
 BASE: NYLON 66, UL 94V-0  
 CONTACT: BRASS, TIN PLATED

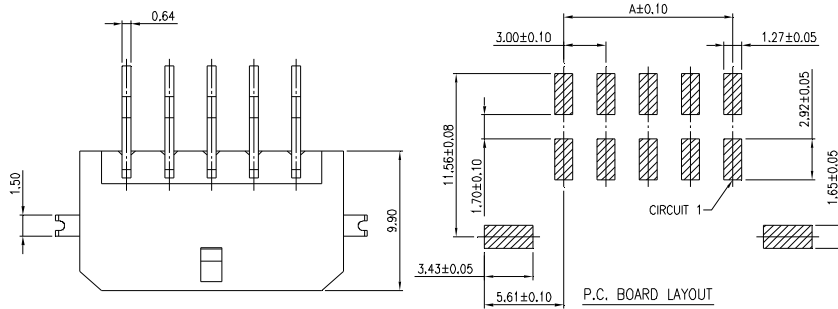
PART NO.	CIRCUITS	DIMENSION	
		A	B
MCv001-Pa0102T-P	2X1	--	6.70
MCv001-Pa0202T-P	2X2	3.00	9.70
MCv001-Pa0302T-P	2X3	6.00	12.70
MCv001-Pa0402T-P	2X4	9.00	15.70
MCv001-Pa0502T-P	2X5	12.00	18.70
MCv001-Pa0602T-P	2X6	15.00	21.70
MCv001-Pa0702T-P	2X7	18.00	24.70
MCv001-Pa0802T-P	2X8	21.00	27.70
MCv001-Pa0902T-P	2X9	24.00	30.70
MCv001-Pa1002T-P	2X10	27.00	33.70
MCv001-Pa1102T-P	2X11	30.00	36.70
MCv001-Pa1202T-P	2X12	33.00	39.70

MATING CONNECTOR	
PRODUCT	PART NO.
HOUSING	MCv001-___-H
TERMINAL	MCv001-T



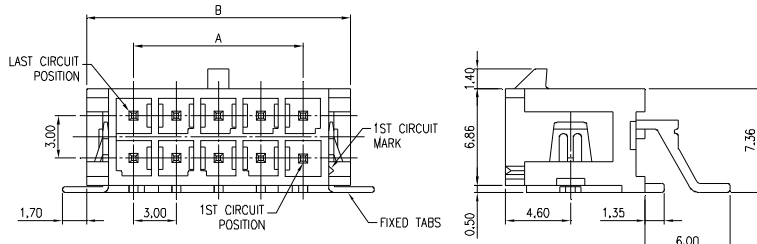
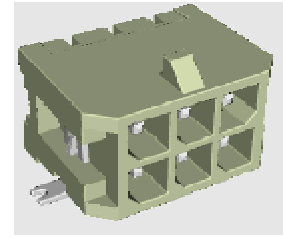
**NOTE** : SOME SIZES, STYLES AND OPTION ARE NON-STANDARD, NON-CANCELLABLE, NON-RETURNABLE

### 3.00 X 3.00mm WAFER - MCv 001 RIGHT ANGLE SURFACE MOUNT TYPE - Rt



#### MATERIALS

BASE: NYLON 6T, UL 94V-0  
COLOR: BLACK



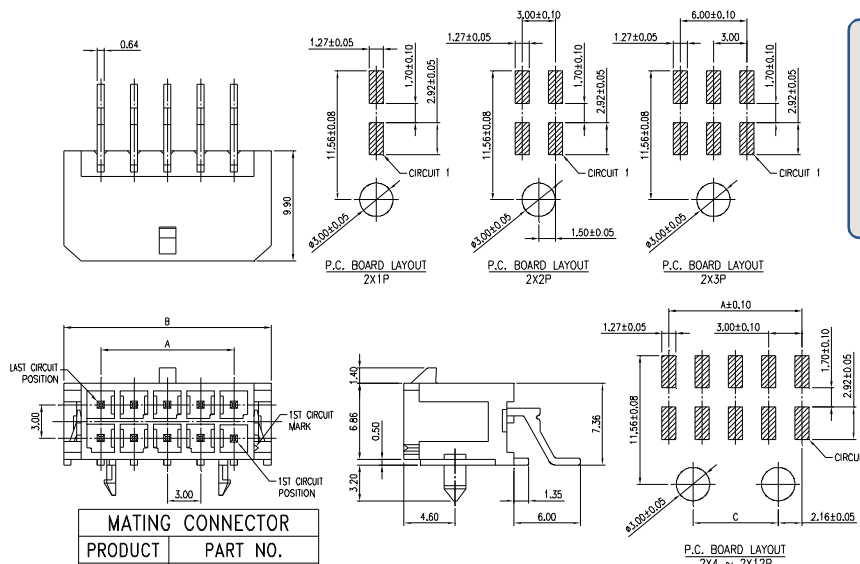
PART NO.	CIRCUITS	DIMENSION	
		A	B
MCv001-Rt0102T	2X1	--	6.70
MCv001-Rt0202T	2X2	3.00	9.70
MCv001-Rt0302T	2X3	6.00	12.70
MCv001-Rt0402T	2X4	9.00	15.70
MCv001-Rt0502T	2X5	12.00	18.70
MCv001-Rt0602T	2X6	15.00	21.70
MCv001-Rt0702T	2X7	18.00	24.70
MCv001-Rt0802T	2X8	21.00	27.70
MCv001-Rt0902T	2X9	24.00	30.70
MCv001-Rt1002T	2X10	27.00	33.70
MCv001-Rt1102T	2X11	30.00	36.70
MCv001-Rt1202T	2X12	33.00	39.70

**MC** v **001** - **Rt** **XX** **02** **T**  
**WAFER SERIES**      **SERIES NO.**      **PCB TYPE**  
 Rt: RIGHT ANGLE SURFACE MOUNT TYPE  
**NO. OF PINS**      **CONTACT PLATING**  
 01 ~ 12      T: TIN PLATED OVER ALL  
**PITCH**      **NO. OF ROWS**  
 v. 3.00 X 3.00 mm

#### MATING CONNECTOR

PRODUCT	PART NO.
HOUSING	MCv001-__-H
TERMINAL	MCv001-T

### 3.00 X 3.00mm WAFER - MCv 001 RIGHT ANGLE SURFACE MOUNT TYPE - Rt (WITH PLASTIC PEG)



#### SPECIFICATIONS

CURRENT RATING: 5A AC/DC  
WITHSTAND VOLTAGE: 1500V AC/MINUTE  
INSULATOR RESISTANCE: 1000M OHM MIN.  
TEMPERATURE RANGE: -40°C ~ +105°C  
CONTACT RESISTANCE: 5m OHM MAX.

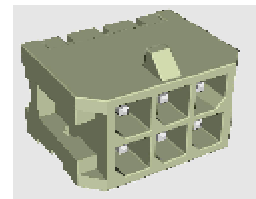
#### MATERIALS

BASE: HIGH TEMPERATURE PLASTIC, UL 94V-0

PART NO.	CIRCUITS	DIMENSION		
		A	B	C
MCv001-Rt0102T-P	2X1	--	6.70	--
MCv001-Rt0202T-P	2X2	3.00	9.70	--
MCv001-Rt0302T-P	2X3	6.00	12.70	--
MCv001-Rt0402T-P	2X4	9.00	15.70	4.68
MCv001-Rt0502T-P	2X5	12.00	18.70	7.68
MCv001-Rt0602T-P	2X6	15.00	21.70	10.68
MCv001-Rt0702T-P	2X7	18.00	24.70	13.68
MCv001-Rt0802T-P	2X8	21.00	27.70	16.68
MCv001-Rt0902T-P	2X9	24.00	30.70	19.68
MCv001-Rt1001T-P	2X10	27.00	33.70	22.68
MCv001-Rt1102T-P	2X11	30.00	36.70	25.68
MCv001-Rt1202T-P	2X12	33.00	39.70	28.68

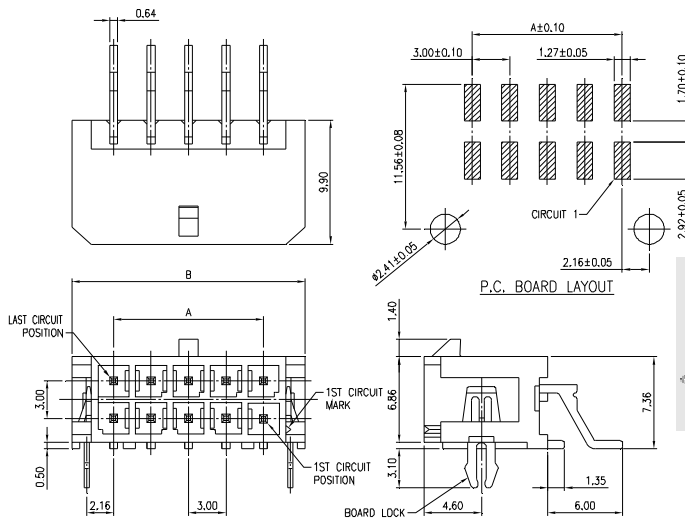
MATING CONNECTOR	
PRODUCT	PART NO.
HOUSING	MCv001-__-H
TERMINAL	MCv001-T

**MC** v **001** - **Rt** **XX** **02** **T** - **P**  
**WAFER SERIES**      **SERIES NO.**      **PCB TYPE**  
 Rt: RIGHT ANGLE SURFACE MOUNT TYPE  
**NO. OF PINS**      **CONTACT PLATING**  
 01 ~ 12      T: TIN PLATED OVER ALL  
**PITCH**      **NO. OF ROWS**      **WITH PLASTIC PEG**  
 v. 3.00 X 3.00 mm



NOTE : SOME SIZES, STYLES AND OPTION ARE NON-STANDARD, NON-CANCELLABLE, NON-RETURNABLE

### 3.00 X 3.00mm WAFER - MCv 001 RIGHT ANGLE SURFACE MOUNT TYPE - Rt (WITH PRONG BOARD LOCK)



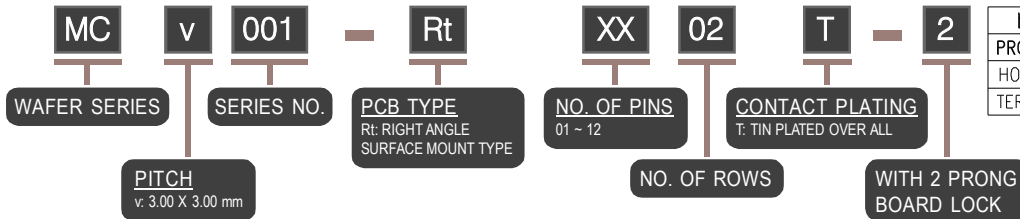
#### SPECIFICATIONS

CURRENT RATING: 5A AC/DC  
 WITHSTAND VOLTAGE: 1500V AC/MINUTE  
 INSULATOR RESISTANCE: 1000M OHM MIN.  
 TEMPERATURE RANGE: -40°C ~ +105°C  
 CONTACT RESISTANCE: 5m OHM MAX.

#### MATERIALS

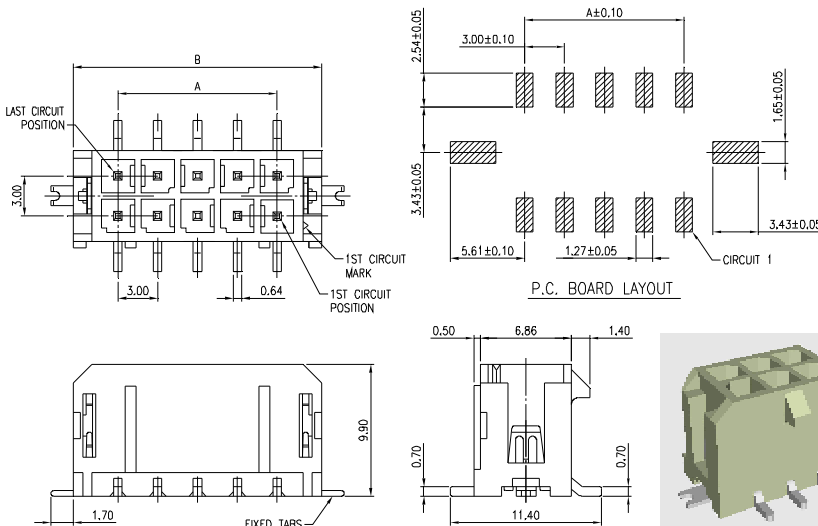
BASE: HIGH TEMPERATURE PLASTIC, UL 94V-0

PART NO.	CIRCUITS	DIMENSION	
		A	B
MCv001-Rt0102T-2	2X1	--	6.70
MCv001-Rt0202T-2	2X2	3.00	9.70
MCv001-Rt0302T-2	2X3	6.00	12.70
MCv001-Rt0402T-2	2X4	9.00	15.70
MCv001-Rt0502T-2	2X5	12.00	18.70
MCv001-Rt0602T-2	2X6	15.00	21.70
MCv001-Rt0702T-2	2X7	18.00	24.70
MCv001-Rt0802T-2	2X8	21.00	27.70
MCv001-Rt0902T-2	2X9	24.00	30.70
MCv001-Rt1002T-2	2X10	27.00	33.70
MCv001-Rt1102T-2	2X11	30.00	36.70
MCv001-Rt1202T-2	2X12	33.00	39.70



MATING CONNECTOR	
PRODUCT	PART NO.
HOUSING	MCv001-__-H
TERMINAL	MCv001-T

### 3.00 X 3.00mm WAFER - MCv 001 SURFACE MOUNT TYPE - Pt



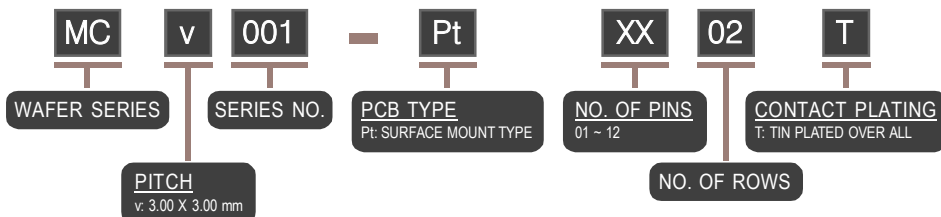
#### SPECIFICATIONS

CURRENT RATING: 5A AC/DC  
 WITHSTAND VOLTAGE: 1500V AC/MINUTE  
 INSULATOR RESISTANCE: 1000M OHM MIN.  
 TEMPERATURE RANGE: -40°C ~ +105°C  
 CONTACT RESISTANCE: 5m OHM MAX.

#### MATERIALS

BASE: HIGH TEMPERATURE PLASTIC, UL 94V-0

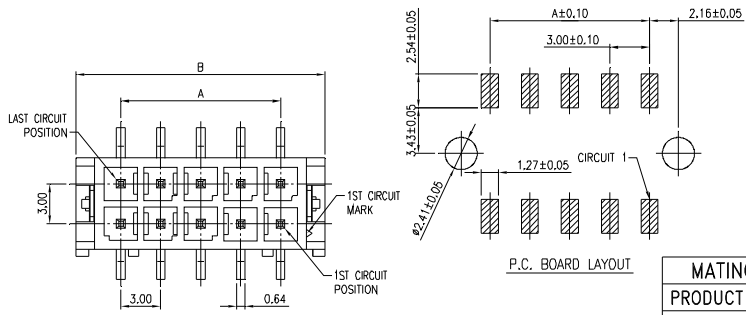
PART NO.	CIRCUITS	DIMENSION	
		A	B
MCv001-Pt0102T	2X1	--	6.70
MCv001-Pt0202T	2X2	3.00	9.70
MCv001-Pt0302T	2X3	6.00	12.70
MCv001-Pt0402T	2X4	9.00	15.70
MCv001-Pt0502T	2X5	12.00	18.70
MCv001-Pt0602T	2X6	15.00	21.70
MCv001-Pt0702T	2X7	18.00	24.70
MCv001-Pt0802T	2X8	21.00	27.70
MCv001-Pt0902T	2X9	24.00	30.70
MCv001-Pt1002T	2X10	27.00	33.70
MCv001-Pt1102T	2X11	30.00	36.70
MCv001-Pt1202T	2X12	33.00	39.70



MATING CONNECTOR	
PRODUCT	PART NO.
HOUSING	MCv001-__-H
TERMINAL	MCv001-T

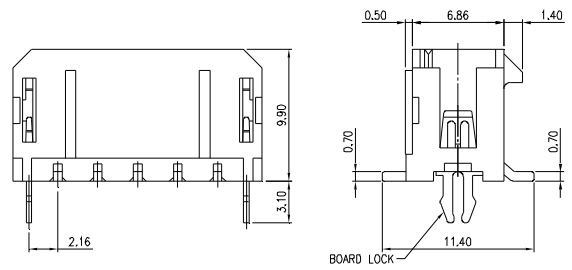
NOTE : SOME SIZES, STYLES AND OPTION ARE NON-STANDARD, NON-CANCELLABLE, NON-RETURNABLE

# 3.00 X 3.00mm WAFER - MCv 001 SURFACE MOUNT TYPE - Pt (WITH PRONG BOARD LOCK)

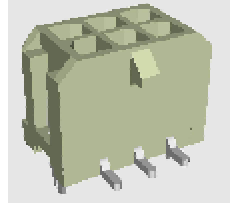


**SPECIFICATIONS**  
 CURRENT RATING: 5A AC/DC  
 WITHSTAND VOLTAGE: 1500V AC/MINUTE  
 INSULATOR RESISTANCE: 1000M OHM MIN.  
 TEMPERATURE RANGE: -40°C ~ +105°C  
 CONTACT RESISTANCE: 5m OHM MAX.

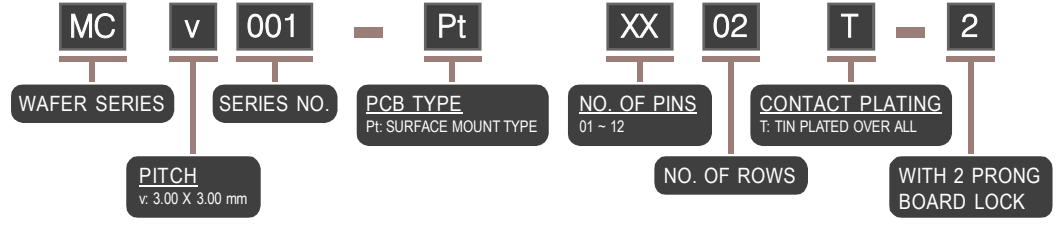
**MATERIALS**  
 BASE: HIGH TEMPERATURE PLASTIC, UL 94V-0



MATING CONNECTOR	
PRODUCT	PART NO.
HOUSING	MCv001-__-H
TERMINAL	MCv001-T

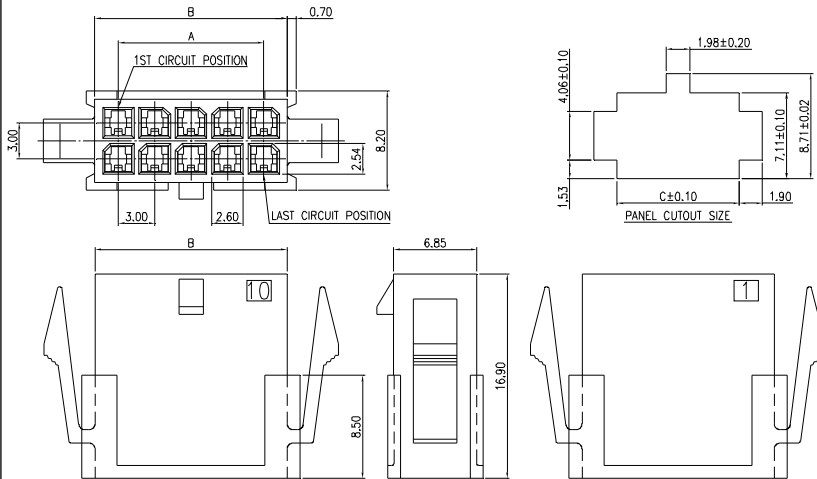


PART NO.	CIRCUITS	DIMENSION	
		A	B
MCv001-Pt0102T-2	2X1	--	6.70
MCv001-Pt0202T-2	2X2	3.00	9.70
MCv001-Pt0302T-2	2X3	6.00	12.70
MCv001-Pt0402T-2	2X4	9.00	15.70
MCv001-Pt0502T-2	2X5	12.00	18.70
MCv001-Pt0602T-2	2X6	15.00	21.70
MCv001-Pt0702T-2	2X7	18.00	24.70
MCv001-Pt0802T-2	2X8	21.00	27.70
MCv001-Pt0902T-2	2X9	24.00	30.70
MCv001-Pt1002T-2	2X10	27.00	33.70
MCv001-Pt1102T-2	2X11	30.00	36.70
MCv001-Pt1202T-2	2X12	33.00	39.70



NOTE : SOME SIZES, STYLES AND OPTION ARE NON-STANDARD, NON-CANCELLABLE, NON-RETURNABLE

### 3.00 X 3.00 mm HOUSING - MCv 001 (MALE, 2 ROWS)



#### SPECIFICATIONS

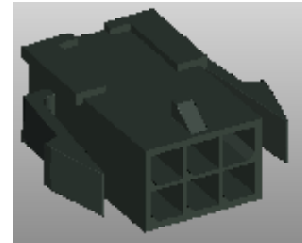
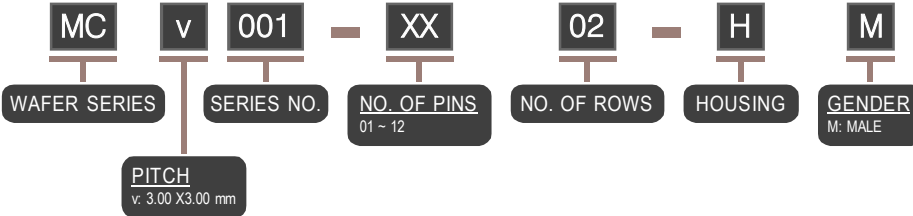
CURRENT RATING: 5A AC/DC  
 WITHSTAND VOLTAGE: 1500V AC/MINUTE  
 INSULATOR RESISTANCE: 1000M OHM MIN.  
 TEMPERATURE RANGE: -40°C ~ +105°C  
 CONTACT RESISTANCE: 5m OHM MAX.

#### MATERIALS

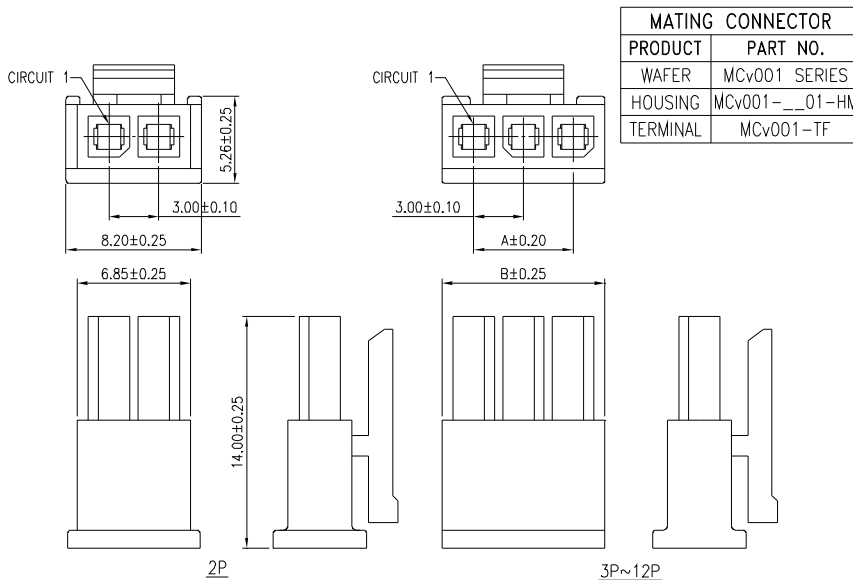
BASE: HIGH TEMPERATURE PLASTIC, UL 94V-0

MATING CONNECTOR	
PRODUCT	PART NO.
HOUSING	MCv001-__02-HF
TERMINAL	MCv001-TM

PART NO.	CIRCUITS	DIMENSION		
		A	B	C
MCv001-0102-HM	2X1	--	3.90	4.09
MCv001-0202-HM	2X2	3.00	6.90	7.09
MCv001-0302-HM	2X3	6.00	9.90	10.08
MCv001-0402-HM	2X4	9.00	12.90	13.08
MCv001-0502-HM	2X5	12.00	15.90	16.08
MCv001-0602-HM	2X6	15.00	18.90	19.08
MCv001-0702-HM	2X7	18.00	21.90	22.07
MCv001-0802-HM	2X8	21.00	24.90	25.07
MCv001-0902-HM	2X9	24.00	27.90	28.07
MCv001-1001-HM	2X10	27.00	30.90	31.06
MCv001-1102-HM	2X11	30.00	33.90	34.06
MCv001-1202-HM	2X12	33.00	36.90	37.06



### 3.00 mm HOUSING - MCv 001 (FEMALE, 1 ROWS)



MATING CONNECTOR	
PRODUCT	PART NO.
WAFER	MCv001 SERIES
HOUSING	MCv001-__01-HM
TERMINAL	MCv001-TF

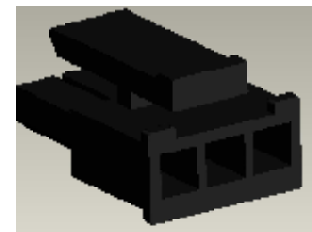
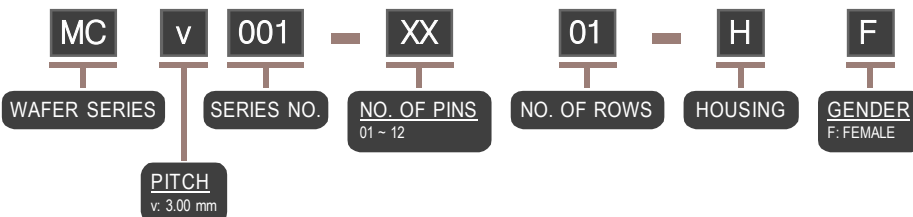
#### SPECIFICATIONS

CURRENT RATING: 5A AC/DC  
 VOLTAGE RATING: 250V AC/DC  
 WITHSTAND VOLTAGE: 1500V AC/MINUTE  
 INSULATOR RESISTANCE: 1000M OHM MIN.  
 TEMPERATURE RANGE: -25°C ~ +85°C  
 CONTACT RESISTANCE: 5m OHM MAX.

#### MATERIALS

BASE: NYLON 66, UL 94V-0

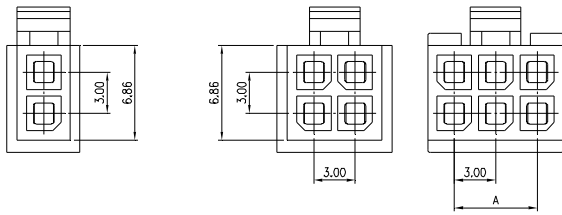
PART NO.	CIRCUITS	DIMENSION	
		A	B
MCv001-0201-HF	1X2	3.00	6.85
MCv001-0301-HF	1X3	6.00	9.85
MCv001-0401-HF	1X4	9.00	12.85
MCv001-0501-HF	1X5	12.00	15.85
MCv001-0601-HF	1X6	15.00	18.85
MCv001-0701-HF	1X7	18.00	21.85
MCv001-0801-HF	1X8	21.00	24.85
MCv001-0901-HF	1X9	24.00	27.85
MCv001-1001-HF	1X10	27.00	30.85
MCv001-1101-HF	1X11	30.00	33.85
MCv001-1201-HF	1X12	33.00	36.85



NOTE : SOME SIZES, STYLES AND OPTION ARE NON-STANDARD, NON-CANCELLABLE, NON-RETURNABLE



# 3.00 X 3.00 mm HOUSING - MCv 001 (FEMALE, 2 ROWS)



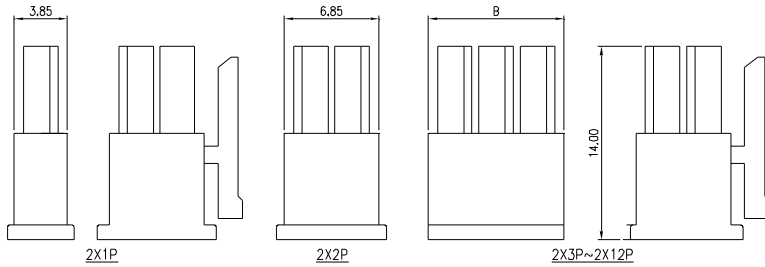
MATING CONNECTOR	
PRODUCT	PART NO.
WAFER	MCv001 SERIES
HOUSING	MCv001-__02-HM
TERMINAL	MCv001-TF

### SPECIFICATIONS

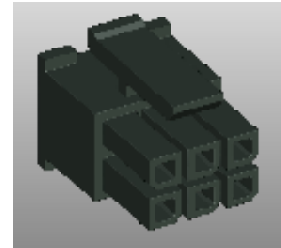
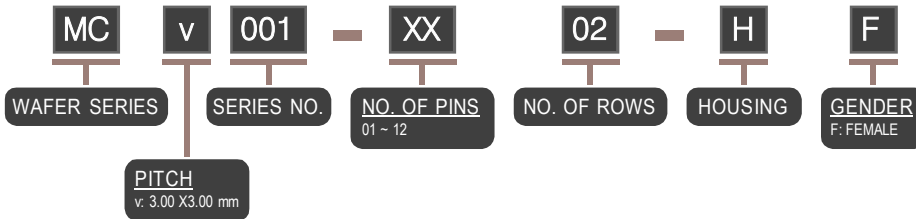
CURRENT RATING: 5A AC/DC  
 WITHSTAND VOLTAGE: 1500V AC/MINUTE  
 INSULATOR RESISTANCE: 1000M OHM MIN.  
 TEMPERATURE RANGE: -40°C ~ +105°C  
 CONTACT RESISTANCE: 5m OHM MAX.

### MATERIALS

BASE: HIGH TEMPERATURE PLASTIC, UL 94V-0



PART NO.	CIRCUITS	DIMENSION	
		A	B
MCv001-0102-HF	2X1	--	3.85
MCv001-0202-HF	2X2	3.00	6.85
MCv001-0302-HF	2X3	6.00	9.85
MCv001-0402-HF	2X4	9.00	12.85
MCv001-0502-HF	2X5	12.00	15.85
MCv001-0602-HF	2X6	15.00	18.85
MCv001-0702-HF	2X7	18.00	21.85
MCv001-0802-HF	2X8	21.00	24.85
MCv001-0902-HF	2X9	24.00	27.85
MCv001-1002-HF	2X10	27.00	30.85
MCv001-1102-HF	2X11	30.00	33.85
MCv001-1202-HF	2X12	33.00	36.85



NOTE : SOME SIZES, STYLES AND OPTION ARE NON-STANDARD, NON-CANCELLABLE, NON-RETURNABLE