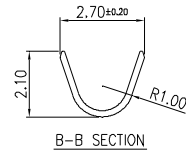
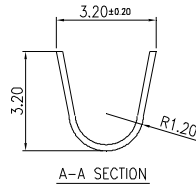
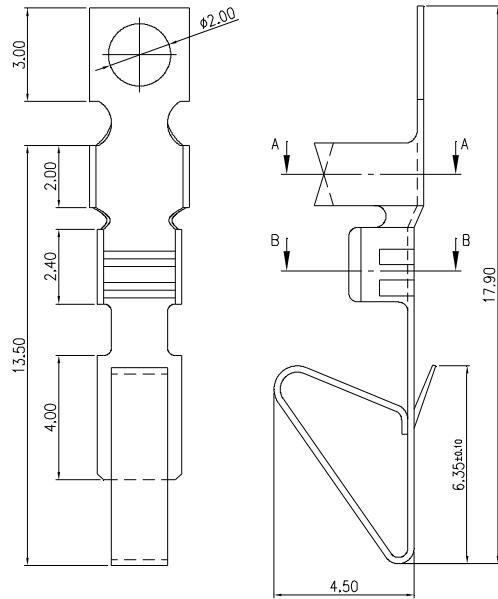


MMI

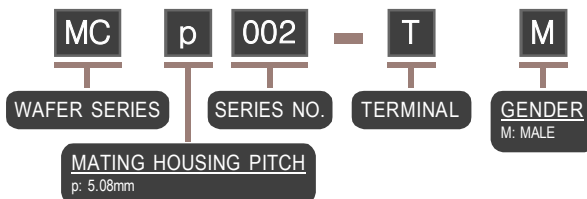
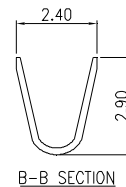
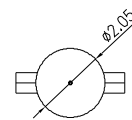
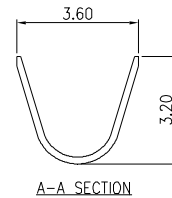
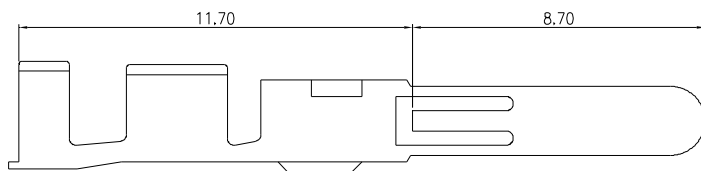
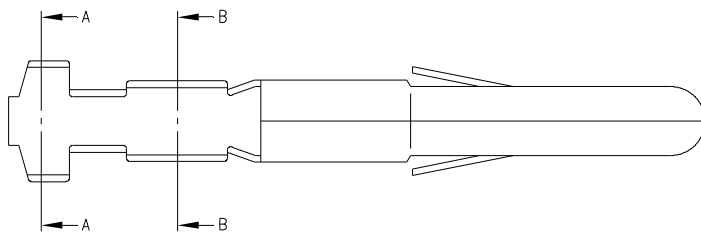
**WAFER, HOUSING & TERMINAL
PITCH: 5.08x5.08mm**

TERMINAL- MCp 001



WIRE RANGE: AWG #18 - #26
 MATERIAL: PHOSPHOR BRONZE
 FINISH: TIN PLATED

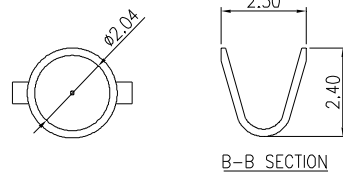
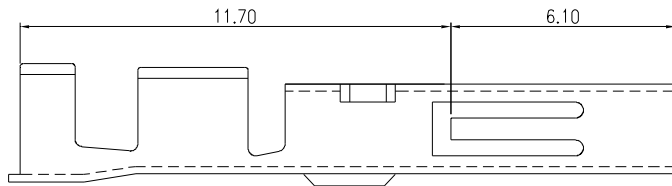
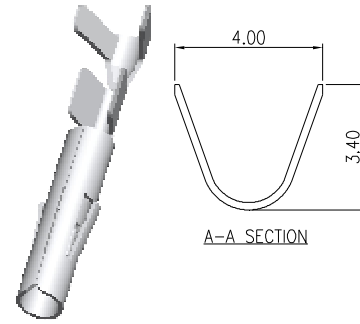
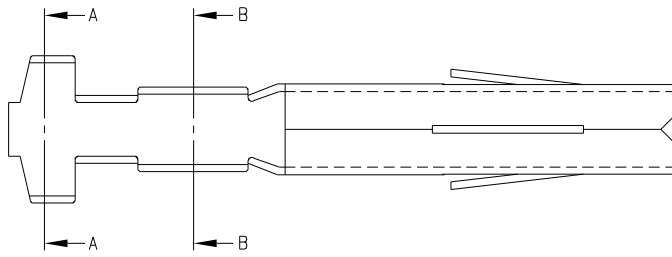
TERMINAL- MCp 002 (MALE)



WIRE RANGE: AWG #18 - #20
 MATERIAL: BRASS
 FINISH: TIN PLATED

NOTE : SOME SIZES, STYLES AND OPTION ARE NON-STANDARD, NON-CANCELLABLE, NON-RETURNABLE

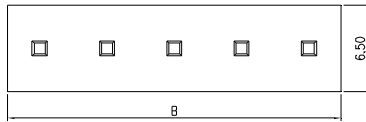
TERMINAL- MCp 002 (FEMALE)



WIRE RANGE: AWG #18 - #20
 MATERIAL: BRASS
 FINISH: TIN PLATED

NOTE : SOME SIZES, STYLES AND OPTION ARE NON-STANDARD, NON-CANCELLABLE, NON-RETURNABLE

5.08 mm WAFER - MCp 001 STRAIGHT TYPE - P



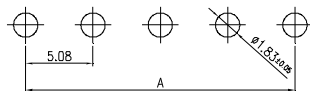
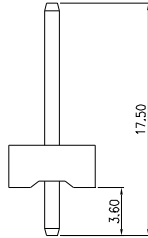
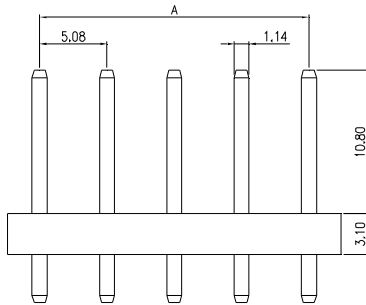
MATING CONNECTOR	
PRODUCT	PART NO.
HOUSING	MCp001-__-H_
TERMINAL	MCp001-T

SPECIFICATIONS

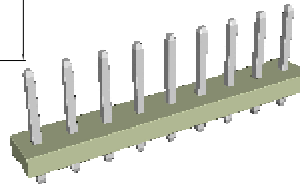
VOLTAGE RATING: 250V AC MAX
 CURRENT RATING: 7A AC/DC
 WITHSTAND VOLTAGE: 1500V AC/MINUTE
 INSULATOR RESISTANCE: 5000M OHM MIN.
 TEMPERATURE RANGE: -40°C ~ +105°C
 CONTACT RESISTANCE: INITIAL VALUE 10m OHM MAX.
 AFTER ENVIRONMENT TESTING: 20m OHM MAX.
 APPLICABLE BOARD THICKNESS: 1.60mm

MATERIALS

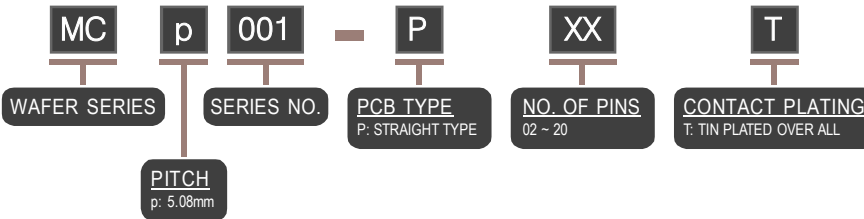
BASE: NYLON 66, UL 94V-0



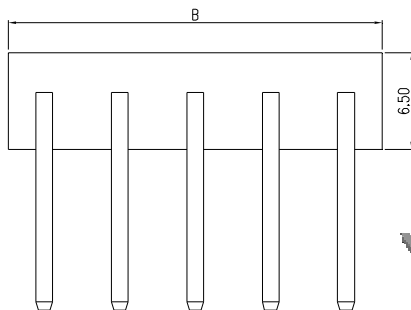
PCB LAYOUT



PART NO.	CIRCUITS	DIMENSION	
		A	B
MCp001-P02T	2	5.08	9.91
MCp001-P03T	3	10.16	14.99
MCp001-P04T	4	15.24	20.07
MCp001-P05T	5	20.32	25.15
MCp001-P06T	6	25.40	30.23
MCp001-P07T	7	30.48	35.31
MCp001-P08T	8	35.56	40.39
MCp001-P09T	9	40.64	45.47
MCp001-P10T	10	45.72	50.55
MCp001-P11T	11	50.80	60.71
MCp001-P12T	12	55.88	65.79
MCp001-P13T	13	60.96	70.87
MCp001-P14T	14	66.04	75.95
MCp001-P15T	15	71.12	81.03
MCp001-P16T	16	76.20	86.11
MCp001-P17T	17	81.28	91.19
MCp001-P18T	18	86.36	96.27
MCp001-P19T	19	91.44	101.35
MCp001-P20T	20	96.52	106.43



5.08 mm WAFER - MCp 001 RIGHT ANGLE REVERSE TYPE - Par



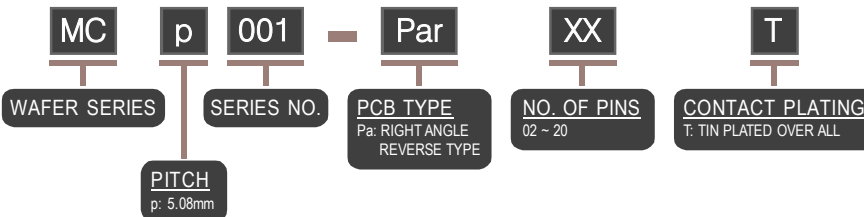
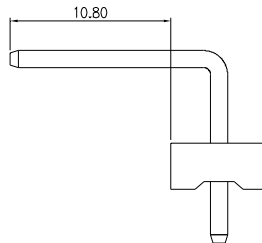
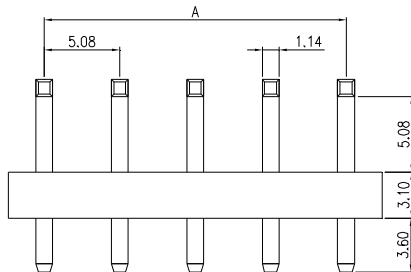
MATING CONNECTOR	
PRODUCT	PART NO.
HOUSING	MCp001-__-H_
TERMINAL	MCp001-T

SPECIFICATIONS

VOLTAGE RATING: 250V AC MAX
 CURRENT RATING: 7A AC/DC
 WITHSTAND VOLTAGE: 1500V AC/MINUTE
 INSULATOR RESISTANCE: 5000M OHM MIN.
 TEMPERATURE RANGE: -40°C ~ +105°C
 CONTACT RESISTANCE: INITIAL VALUE 10m OHM MAX.
 AFTER ENVIRONMENT TESTING: 20m OHM MAX.
 APPLICABLE BOARD THICKNESS: 1.60mm

MATERIALS

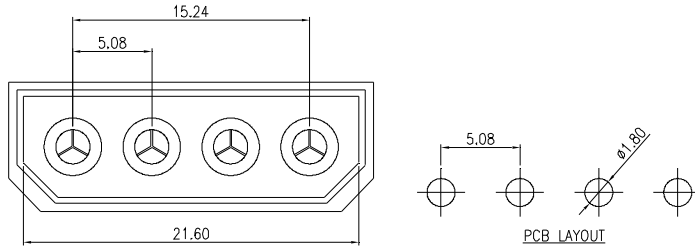
BASE: NYLON 66, UL 94V-0



PART NO.	CIRCUITS	DIMENSION	
		A	B
MCp001-Par02T	2	5.08	9.91
MCp001-Par03T	3	10.16	14.99
MCp001-Par04T	4	15.24	20.07
MCp001-Par05T	5	20.32	25.15
MCp001-Par06T	6	25.40	30.23
MCp001-Par07T	7	30.48	35.31
MCp001-Par08T	8	35.56	40.39
MCp001-Par09T	9	40.64	45.47
MCp001-Par10T	10	45.72	50.55
MCp001-Par11T	11	50.80	60.71
MCp001-Par12T	12	55.88	65.79
MCp001-Par13T	13	60.96	70.87
MCp001-Par14T	14	66.04	75.95
MCp001-Par15T	15	71.12	81.03
MCp001-Par16T	16	76.20	86.11
MCp001-Par17T	17	81.28	91.19
MCp001-Par18T	18	86.36	96.27
MCp001-Par19T	19	91.44	101.35
MCp001-Par20T	20	96.52	106.43

NOTE : SOME SIZES, STYLES AND OPTION ARE NON-STANDARD, NON-CANCELLABLE, NON-RETURNABLE

5.08 mm WAFER - MCp 002 STRAIGHT TYPE - P

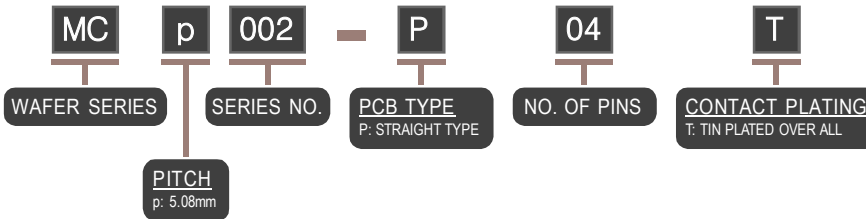
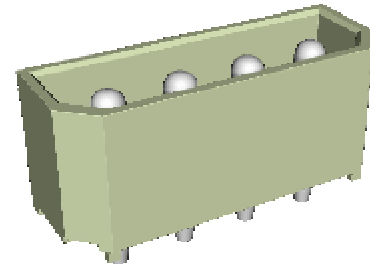
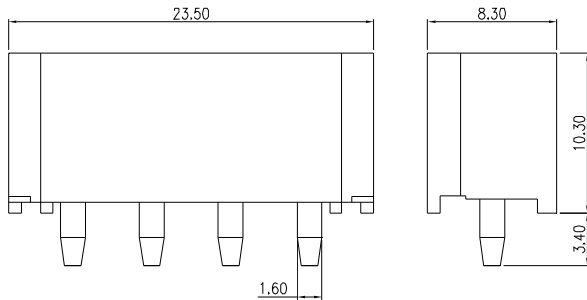


SPECIFICATIONS

VOLTAGE RATING: 250V AC MAX
 CURRENT RATING: 7A AC/DC
 WITHSTAND VOLTAGE: 1500V AC/MINUTE
 INSULATOR RESISTANCE: 5000M OHM MIN.
 TEMPERATURE RANGE: -40°C ~ +105°C
 CONTACT RESISTANCE: INITIAL VALUE 10m OHM MAX.
 AFTER ENVIRONMENT TESTING: 20m OHM MAX.
 APPLICABLE BOARD THICKNESS: 1.60mm

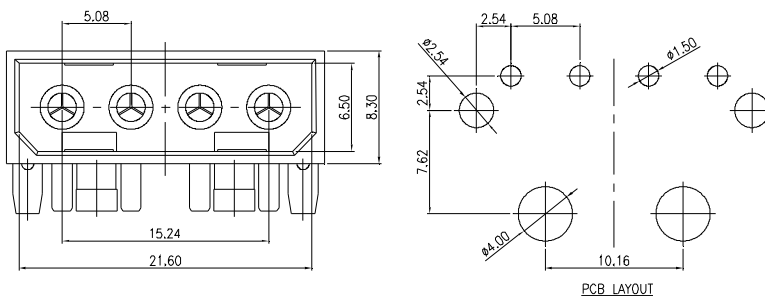
MATERIALS

BASE: NYLON 66, UL 94V-0



MATING CONNECTOR	
PRODUCT	PART NO.
HOUSING	MCp002-04-HF
TERMINAL	MCp002-TF

5.08 mm WAFER - MCp 002 RIGHT ANGLE TYPE - Pa

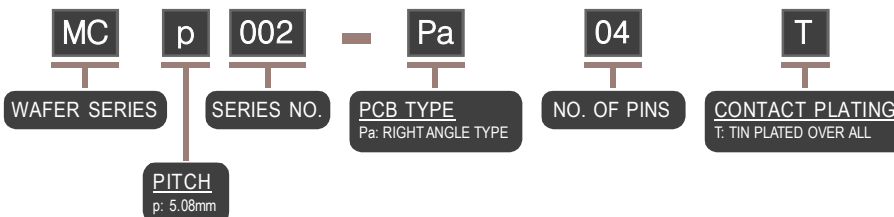
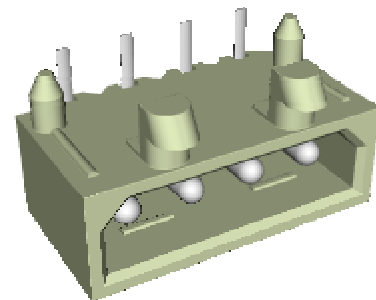
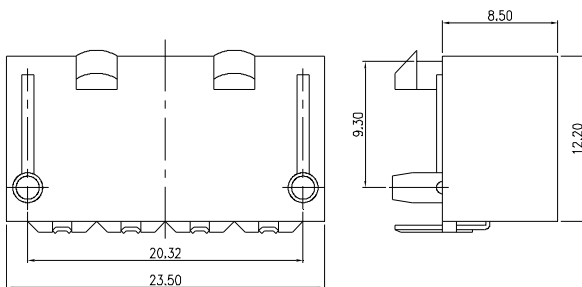


SPECIFICATIONS

VOLTAGE RATING: 250V AC MAX
 CURRENT RATING: 5A AC/DC
 WITHSTAND VOLTAGE: 1500V AC/MINUTE
 INSULATOR RESISTANCE: 1000M OHM MIN.
 TEMPERATURE RANGE: -25°C ~ +85°C
 CONTACT RESISTANCE: INITIAL VALUE 10m OHM MAX.
 AFTER ENVIRONMENT TESTING: 20m OHM MAX.

MATERIALS

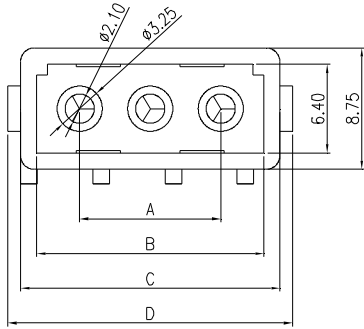
CONTACT: BRASS, TIN PLATED
 BASE: NYLON 66, UL 94V-0



MATING CONNECTOR	
PRODUCT	PART NO.
HOUSING	MCp002-04-HF
TERMINAL	MCp002-TF

NOTE : SOME SIZES, STYLES AND OPTION ARE NON-STANDARD, NON-CANCELLABLE, NON-RETURNABLE

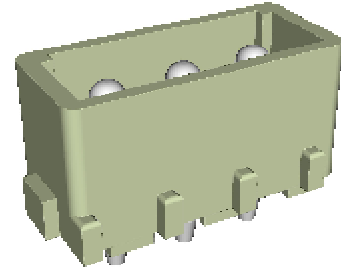
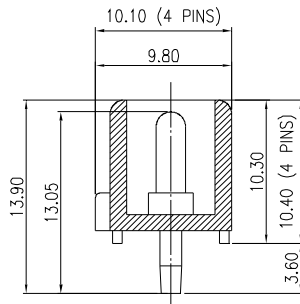
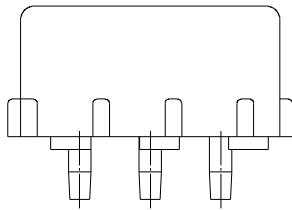
5.08 mm WAFER - MCp 003 STRAIGHT TYPE - P



MATING CONNECTOR	
PRODUCT	PART NO.
HOUSING	MCp002-04-HF
TERMINAL	MCp002-TF

SPECIFICATIONS
 VOLTAGE RATING: 250V AC MAX
 CURRENT RATING: 7A AC/DC

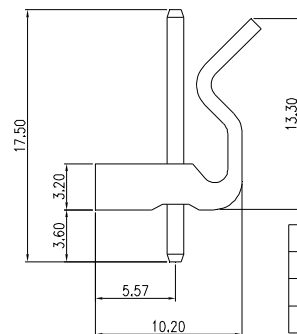
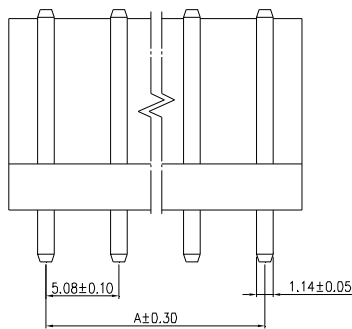
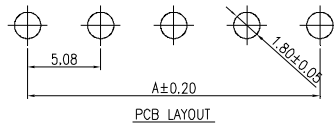
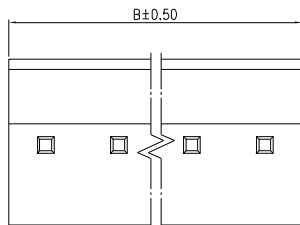
MATERIALS
 BASE: NYLON 66, UL 94V-0



PART NO.	CIRCUITS	DIMENSION			
		A	B	C	D
MCp003-P02T	2	5.08	11.30	13.60	15.42
MCp003-P03T	3	10.16	16.38	18.68	20.50
MCp003-P04T	4	15.24	21.30	23.70	25.40

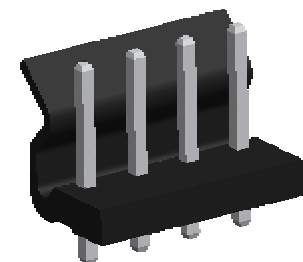
MC **p** **003** - **P** **XX** **T**
 WAFER SERIES SERIES NO. PCB TYPE (P: STRAIGHT TYPE) NO. OF PINS (02 - 04) CONTACT PLATING (T: TIN PLATED OVER ALL)
 PITCH p: 5.08mm

5.08 mm WAFER - MCp 005 STRAIGHT TYPE - P



SPECIFICATIONS
 VOLTAGE RATING: 250V AC MAX
 CURRENT RATING: 7A AC/DC
 WITHSTAND VOLTAGE: 1500V AC/MINUTE
 INSULATOR RESISTANCE: 1000M OHM MIN.
 TEMPERATURE RANGE: -25°C ~ +85°C
 CONTACT RESISTANCE: INITIAL VALUE 20m OHM MAX.

MATERIALS
 CONTACT: BRASS, TIN PLATED
 BASE: NYLON 66, UL 94V-2



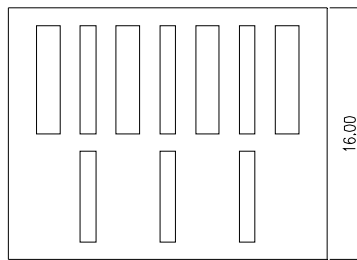
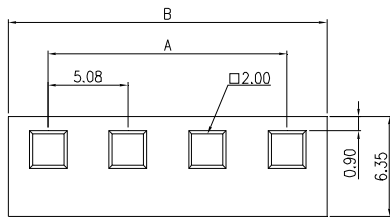
MATING CONNECTOR	
PRODUCT	PART NO.
HOUSING	MCp001 SERIES
TERMINAL	MCp001-T

PART NO.	CIRCUITS	DIMENSION	
		A	B
MCp005-P02T	2	5.08	9.91
MCp005-P03T	3	10.16	14.99
MCp005-P04T	4	15.24	20.07
MCp005-P05T	5	20.32	25.15
MCp005-P06T	6	25.40	30.23
MCp005-P07T	7	30.48	35.31
MCp005-P08T	8	35.56	40.39
MCp005-P09T	9	40.64	45.47
MCp005-P10T	10	45.72	50.55

MC **p** **005** - **P** **XX** **T**
 WAFER SERIES SERIES NO. PCB TYPE (P: STRAIGHT TYPE) NO. OF PINS (02 - 10) CONTACT PLATING (T: TIN PLATED OVER ALL)
 PITCH p: 5.08mm

NOTE : SOME SIZES, STYLES AND OPTION ARE NON-STANDARD, NON-CANCELLABLE, NON-RETURNABLE

5.08 mm HOUSING - MCp 001



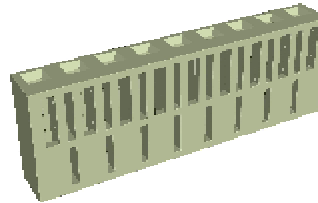
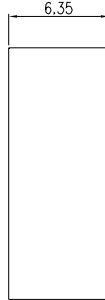
MATING CONNECTOR	
PRODUCT	PART NO.
WAFER	MCp001 SERIES
TERMINAL	MCp001-T

SPECIFICATIONS

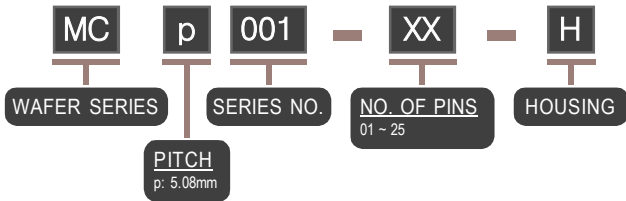
VOLTAGE RATING: 250V AC/DC
 CURRENT RATING: 7A AC/DC
 WITHSTAND VOLTAGE: 1500V AC/MINUTE
 INSULATOR RESISTANCE: 5000M OHM MIN.
 TEMPERATURE RANGE: -40°C ~ +105°C
 CONTACT RESISTANCE: INITIAL VALUE 10m OHM MAX.
 AFTER ENVIRONMENTAL TESTING: 20m OHM MAX.

MATERIALS

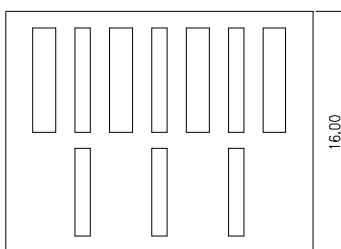
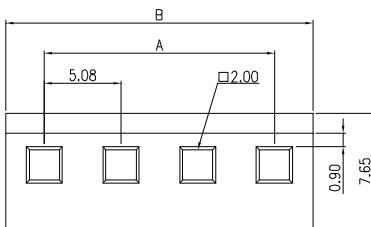
BASE: NYLON, UL 94V-2



PART NO.	CIRCUITS	DIMENSION	
		A	B
MCp001-01-H	1	--	5.08
MCp001-02-H	2	5.08	10.16
MCp001-03-H	3	10.16	15.24
MCp001-04-H	4	15.24	20.32
MCp001-05-H	5	20.32	25.40
MCp001-06-H	6	25.40	30.48
MCp001-07-H	7	30.48	35.56
MCp001-08-H	8	35.56	40.64
MCp001-09-H	9	40.64	45.72
MCp001-10-H	10	45.72	50.80
MCp001-11-H	11	50.80	55.88
MCp001-12-H	12	55.88	60.96
MCp001-13-H	13	60.96	66.04
MCp001-14-H	14	66.04	71.12
MCp001-15-H	15	71.12	76.20
MCp001-16-H	16	76.20	81.28
MCp001-17-H	17	81.28	86.36
MCp001-18-H	18	86.36	91.44
MCp001-19-H	19	91.44	96.52
MCp001-20-H	20	96.52	101.60
MCp001-21-H	21	101.60	106.68
MCp001-22-H	22	106.68	111.76
MCp001-23-H	23	111.76	116.84
MCp001-24-H	24	116.84	121.92
MCp001-25-H	25	121.92	127.00



5.08 mm HOUSING - MCp 001 (WITH LOCK)



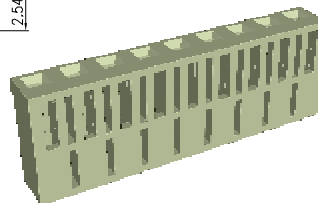
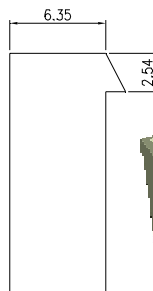
MATING CONNECTOR	
PRODUCT	PART NO.
WAFER	MCp001 SERIES
TERMINAL	MCp001-T

SPECIFICATIONS

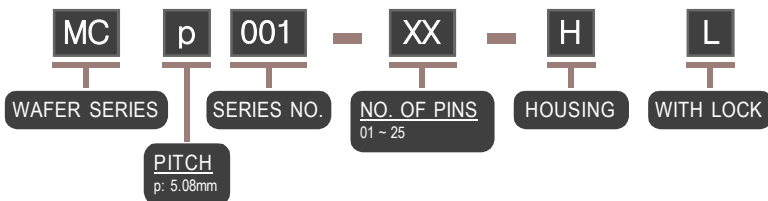
VOLTAGE RATING: 250V AC/DC
 CURRENT RATING: 7A AC/DC
 WITHSTAND VOLTAGE: 1500V AC/MINUTE
 INSULATOR RESISTANCE: 5000M OHM MIN.
 TEMPERATURE RANGE: -40°C ~ +105°C
 CONTACT RESISTANCE: INITIAL VALUE 10m OHM MAX.
 AFTER ENVIRONMENTAL TESTING: 20m OHM MAX.

MATERIALS

BASE: NYLON, UL 94V-2

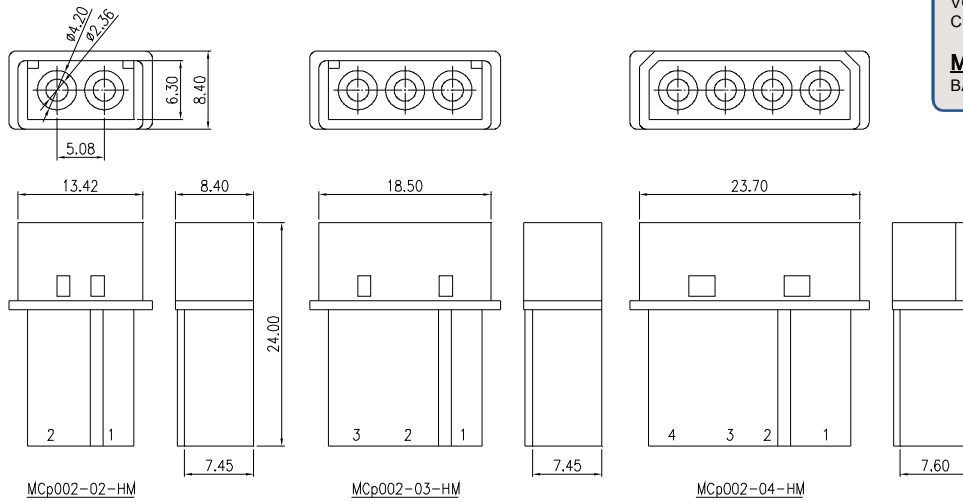


PART NO.	CIRCUITS	DIMENSION	
		A	B
MCp001-01-HL	1	--	5.08
MCp001-02-HL	2	5.08	10.16
MCp001-03-HL	3	10.16	15.24
MCp001-04-HL	4	15.24	20.32
MCp001-05-HL	5	20.32	25.40
MCp001-06-HL	6	25.40	30.48
MCp001-07-HL	7	30.48	35.56
MCp001-08-HL	8	35.56	40.64
MCp001-09-HL	9	40.64	45.72
MCp001-10-HL	10	45.72	50.80
MCp001-11-HL	11	50.80	55.88
MCp001-12-HL	12	55.88	60.96
MCp001-13-HL	13	60.96	66.04
MCp001-14-HL	14	66.04	71.12
MCp001-15-HL	15	71.12	76.20
MCp001-16-HL	16	76.20	81.28
MCp001-17-HL	17	81.28	86.36
MCp001-18-HL	18	86.36	91.44
MCp001-19-HL	19	91.44	96.52
MCp001-20-HL	20	96.52	101.60
MCp001-21-HL	21	101.60	106.68
MCp001-22-HL	22	106.68	111.76
MCp001-23-HL	23	111.76	116.84
MCp001-24-HL	24	116.84	121.92
MCp001-25-HL	25	121.92	127.00



NOTE : SOME SIZES, STYLES AND OPTION ARE NON-STANDARD, NON-CANCELLABLE, NON-RETURNABLE

5.08 mm HOUSING - MCp 002 (MALE)



SPECIFICATIONS

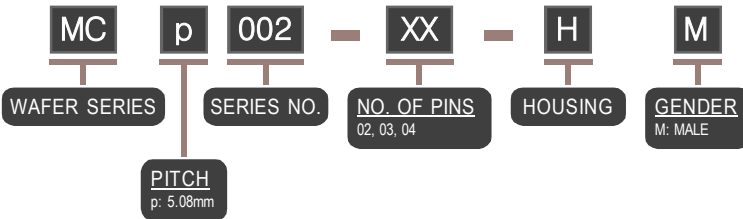
VOLTAGE RATING: 250V AC/DC
CURRENT RATING: 5A AC/DC

MATERIALS

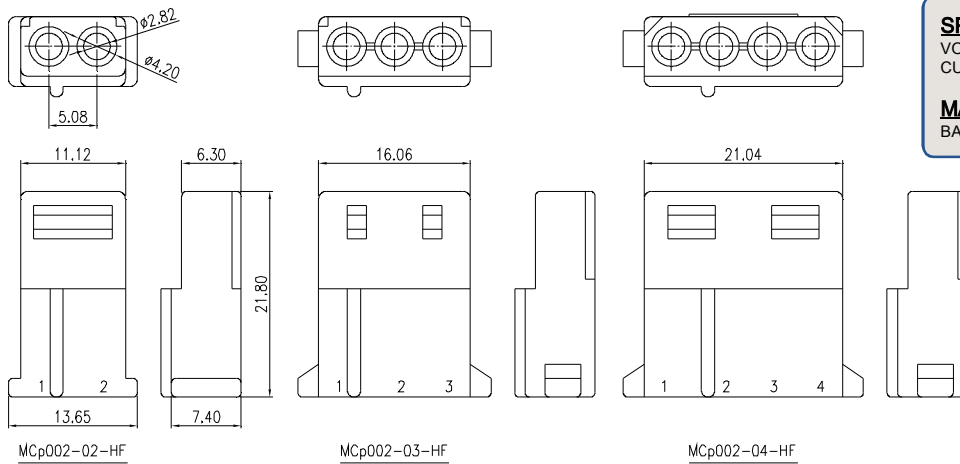
BASE: NYLON, UL 94V-2

MATING CONNECTOR

PRODUCT	PART NO.
HOUSING	MCp002-__-HF
TERMINAL	MCp002-TM



5.08 mm HOUSING - MCp 002 (FEMALE)



SPECIFICATIONS

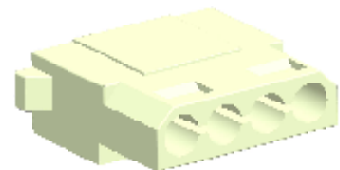
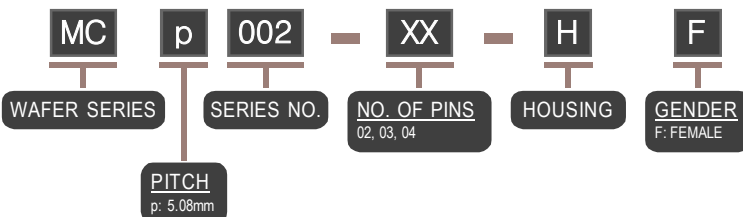
VOLTAGE RATING: 250V AC/DC
CURRENT RATING: 5A AC/DC

MATERIALS

BASE: NYLON, UL 94V-2

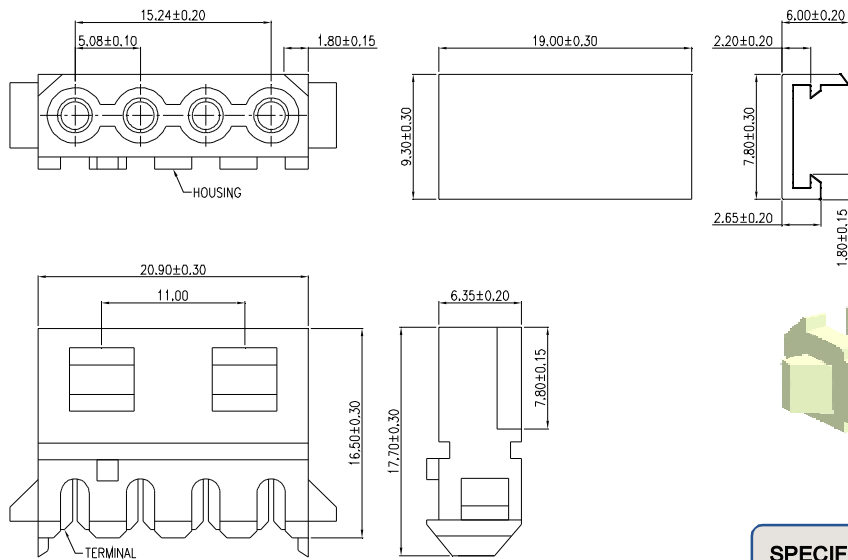
MATING CONNECTOR

PRODUCT	PART NO.
WAFER	MCp002 SERIES
	MCp003 SERIES
HOUSING	MCp002-__-HM
TERMINAL	MCp002-TF

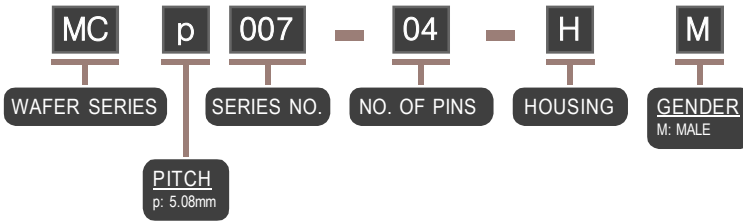
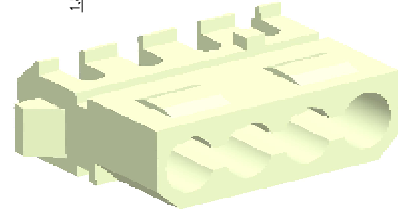


NOTE : SOME SIZES, STYLES AND OPTION ARE NON-STANDARD, NON-CANCELLABLE, NON-RETURNABLE

5.08 mm HOUSING - MCp 007 (MALE)



MATING CONNECTOR	
PRODUCT	PART NO.
WAFER	MCp007-04-HF
TERMINAL	MCp007-TM



SPECIFICATIONS

VOLTAGE RATING: 250V AC/DC
 CURRENT RATING: 7A AC/DC
 WITHSTAND VOLTAGE: 1500V AC/MINUTE
 INSULATOR RESISTANCE: 1000M OHM MIN.
 TEMPERATURE RANGE: -25°C ~ +85°C
 CONTACT RESISTANCE: 20m OHM MAX.

MATERIALS

BASE: NYLON, UL 94V-2
 CONTACT: BRASS, PHOSPHOR BRONZE, TIN PLATED

NOTE : SOME SIZES, STYLES AND OPTION ARE NON-STANDARD, NON-CANCELLABLE, NON-RETURNABLE